

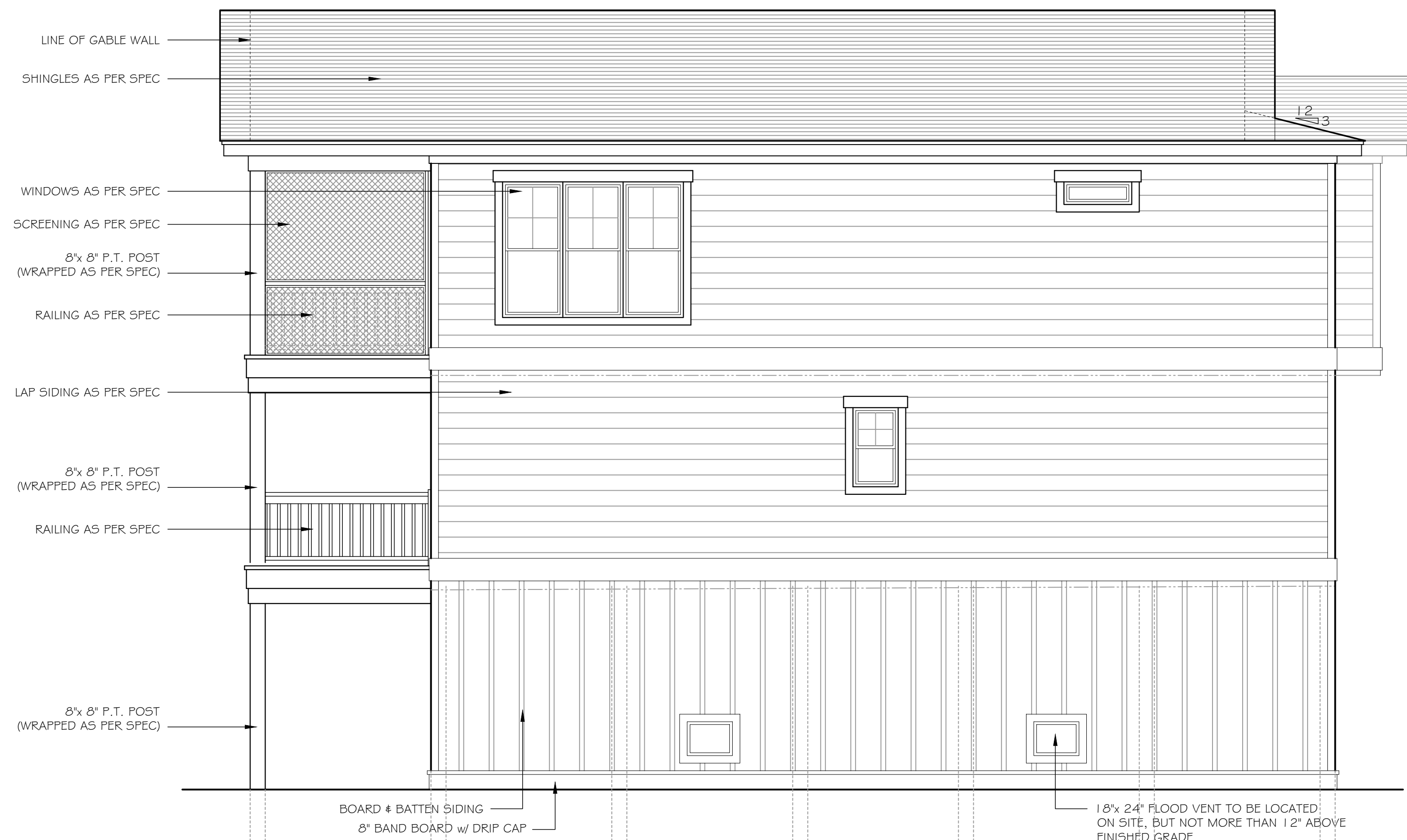
REAR ELEVATION

SCALE: 1/4" = 1'-0"



FRONT ELEVATION

SCALE: 1/4" = 1'-0"



LEFT SIDE ELEVATION

SCALE: 1/4" = 1'-0"



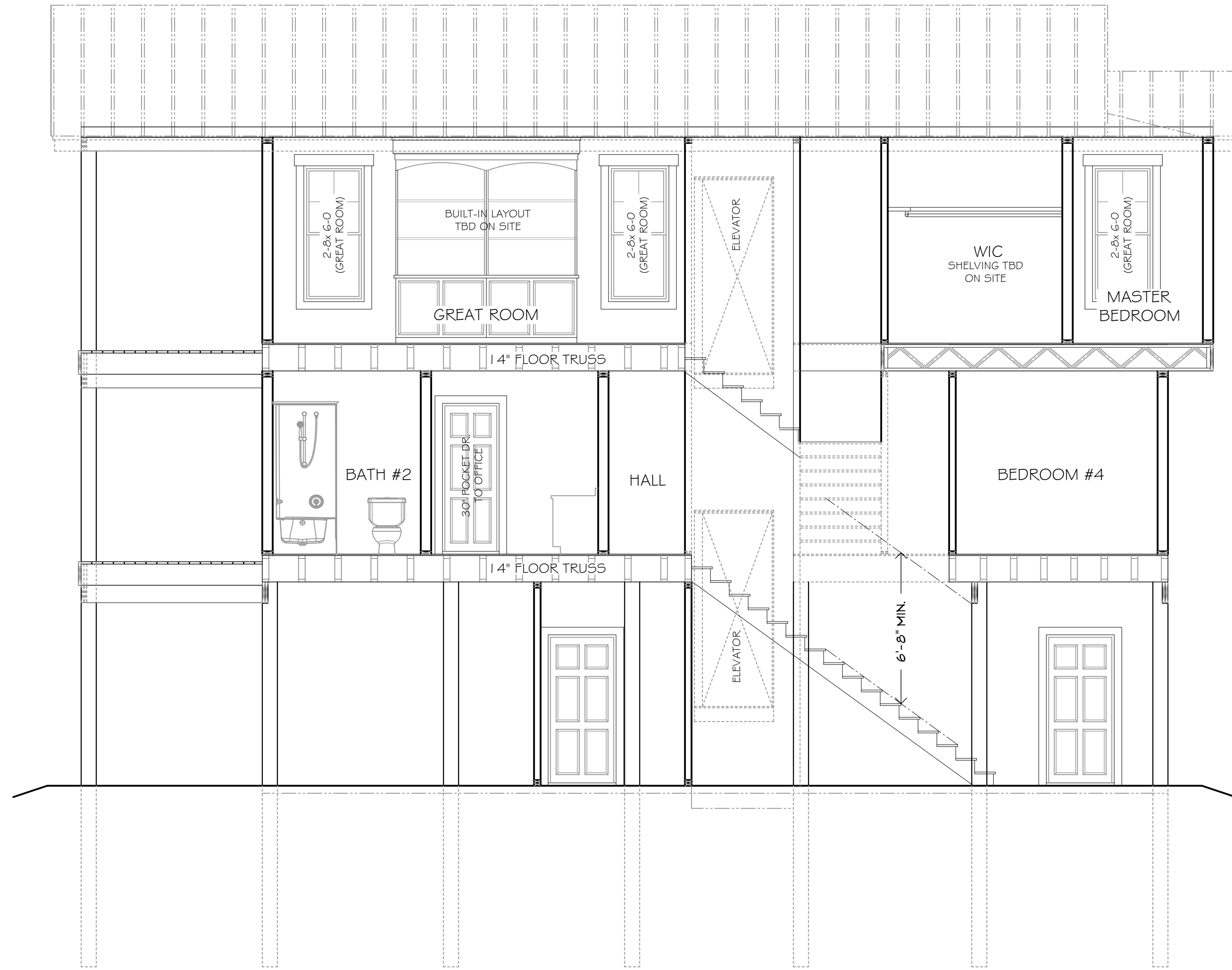
RIGHT SIDE ELEVATION

SCALE: 1/4" = 1'-0"

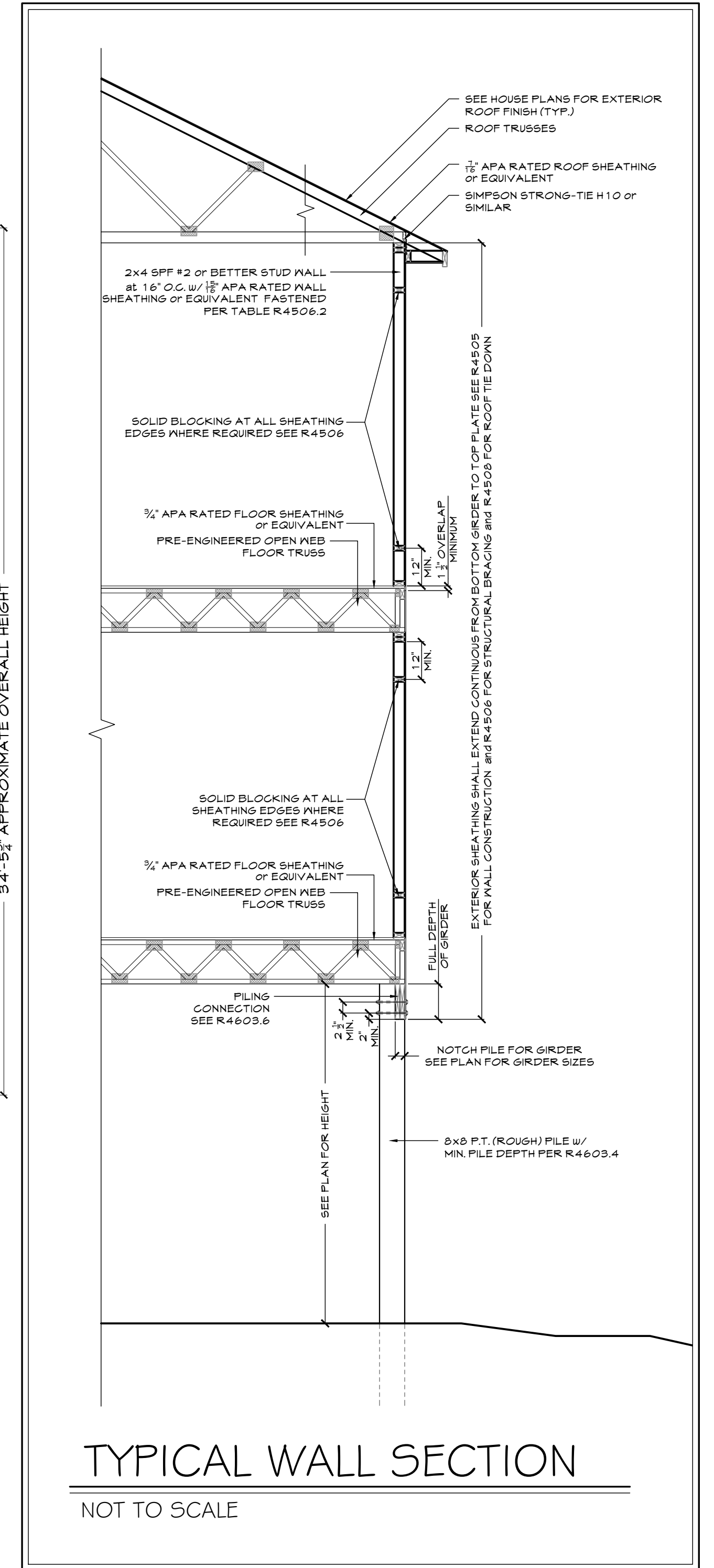
70 Ground Floor Heated Sq. Ft.
1296 First Floor Heated Sq. Ft.
1309 Second Floor Heated Sq. Ft.
2675 Total Heated Sq. Ft.
772 Garage Sq. Ft.
256 Rear Porch Sq. Ft. (1st Floor)
157 Rear Porch Sq. Ft. (2nd Floor)
99 Screen Porch Sq. Ft. (2nd Floor)



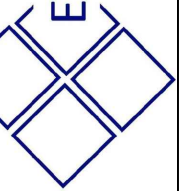
A2
SECTION
SCALE: 1/4" = 1'-0"



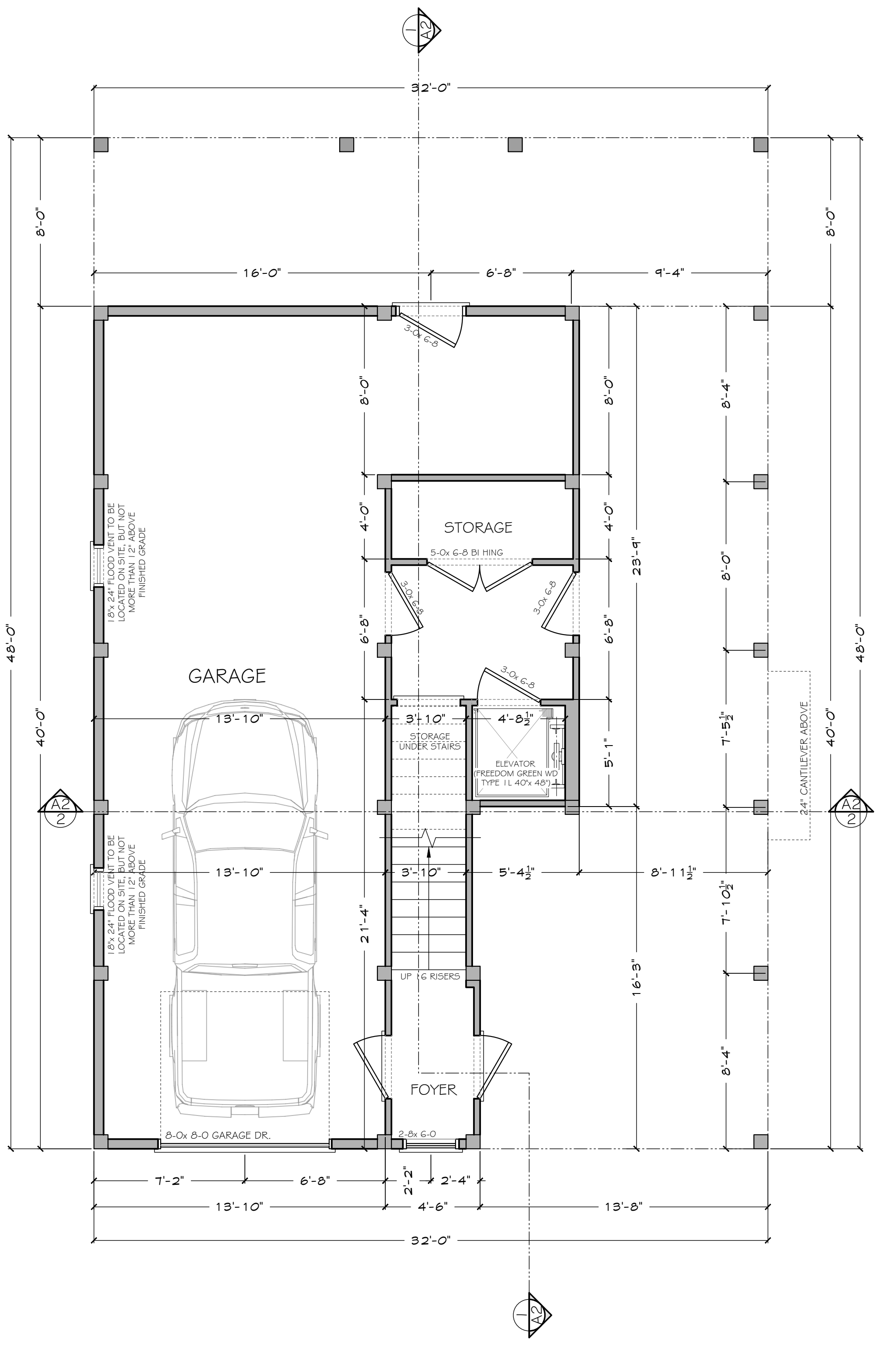
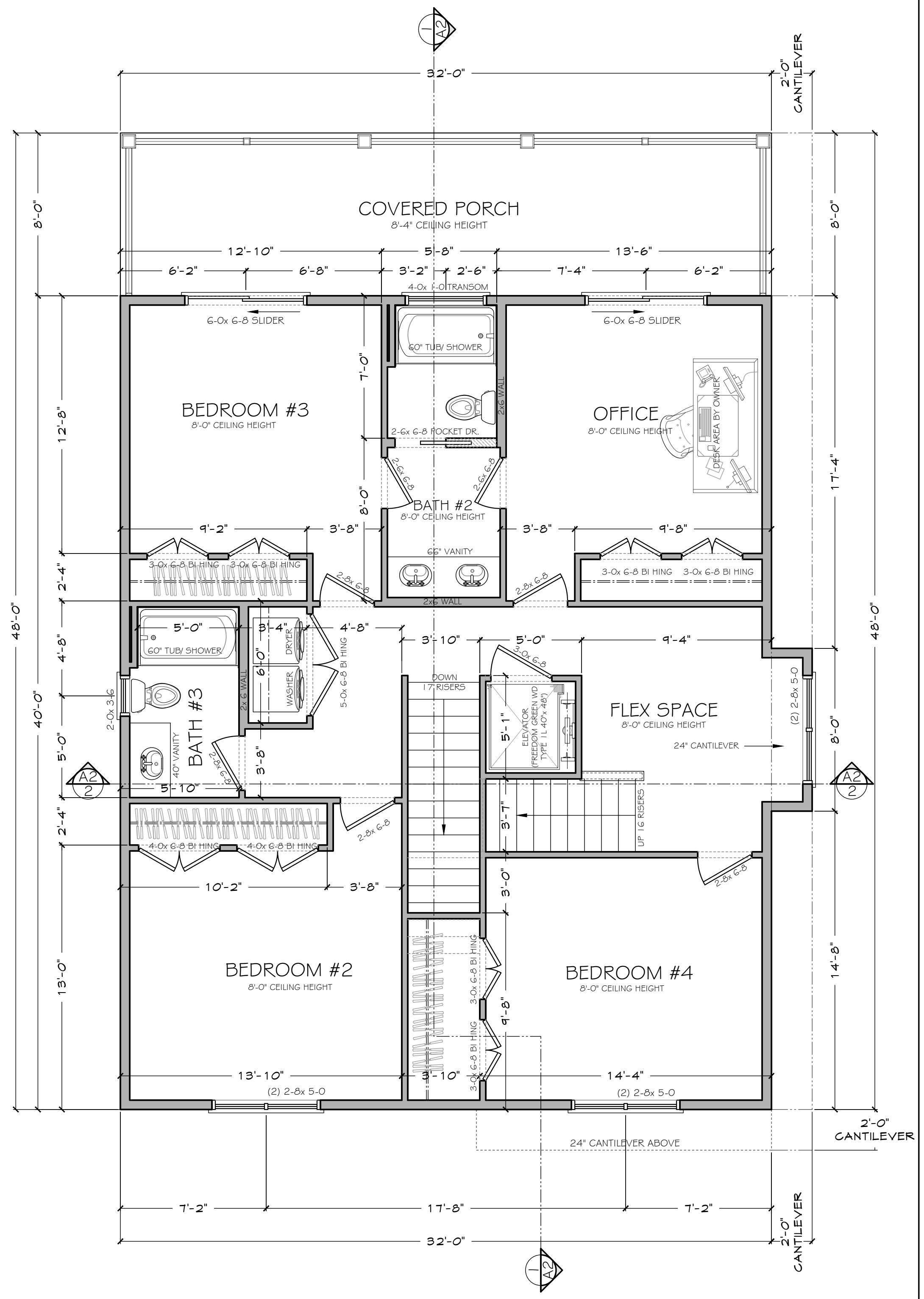
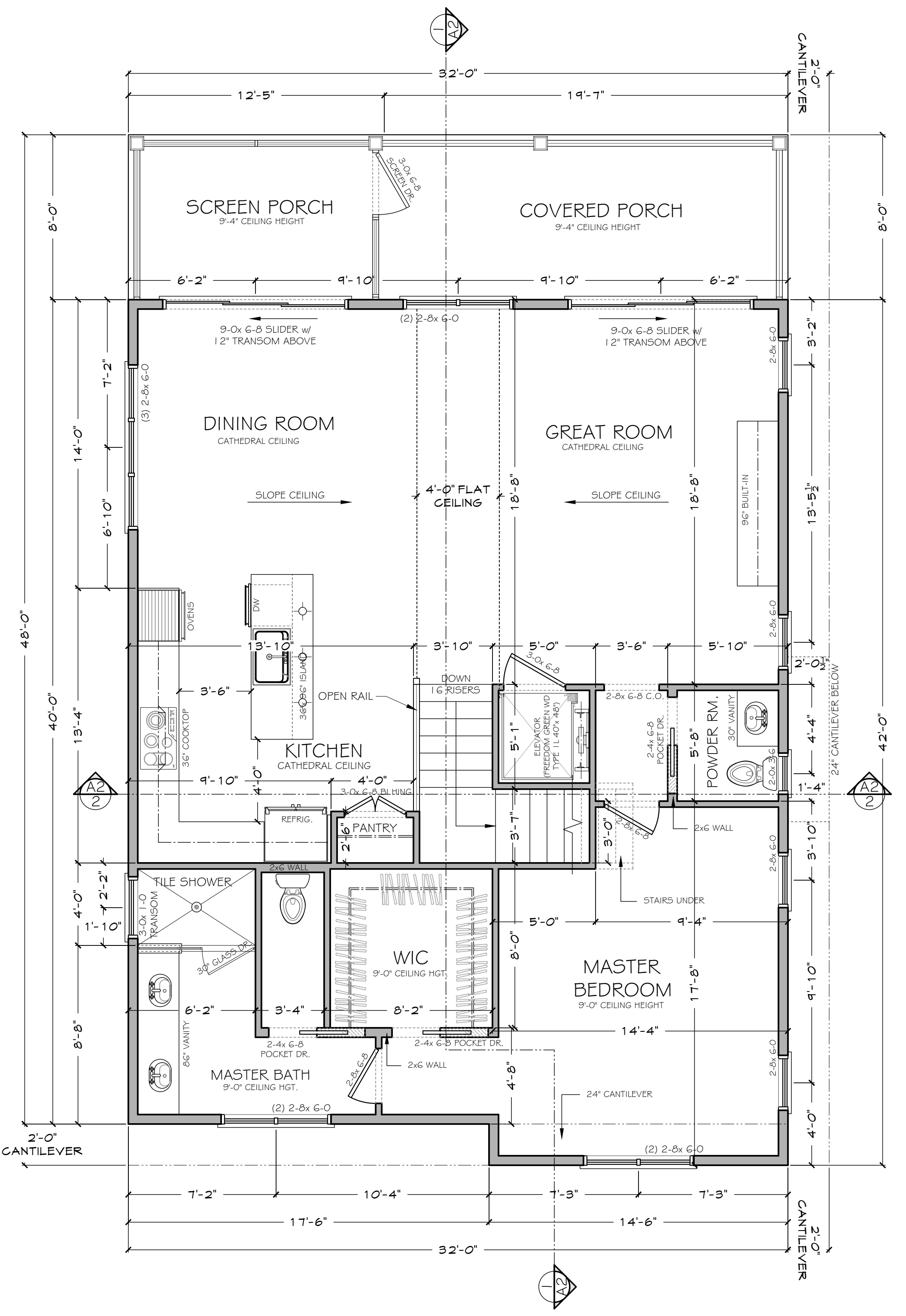
A2
SECTION
SCALE: 1/4" = 1'-0"



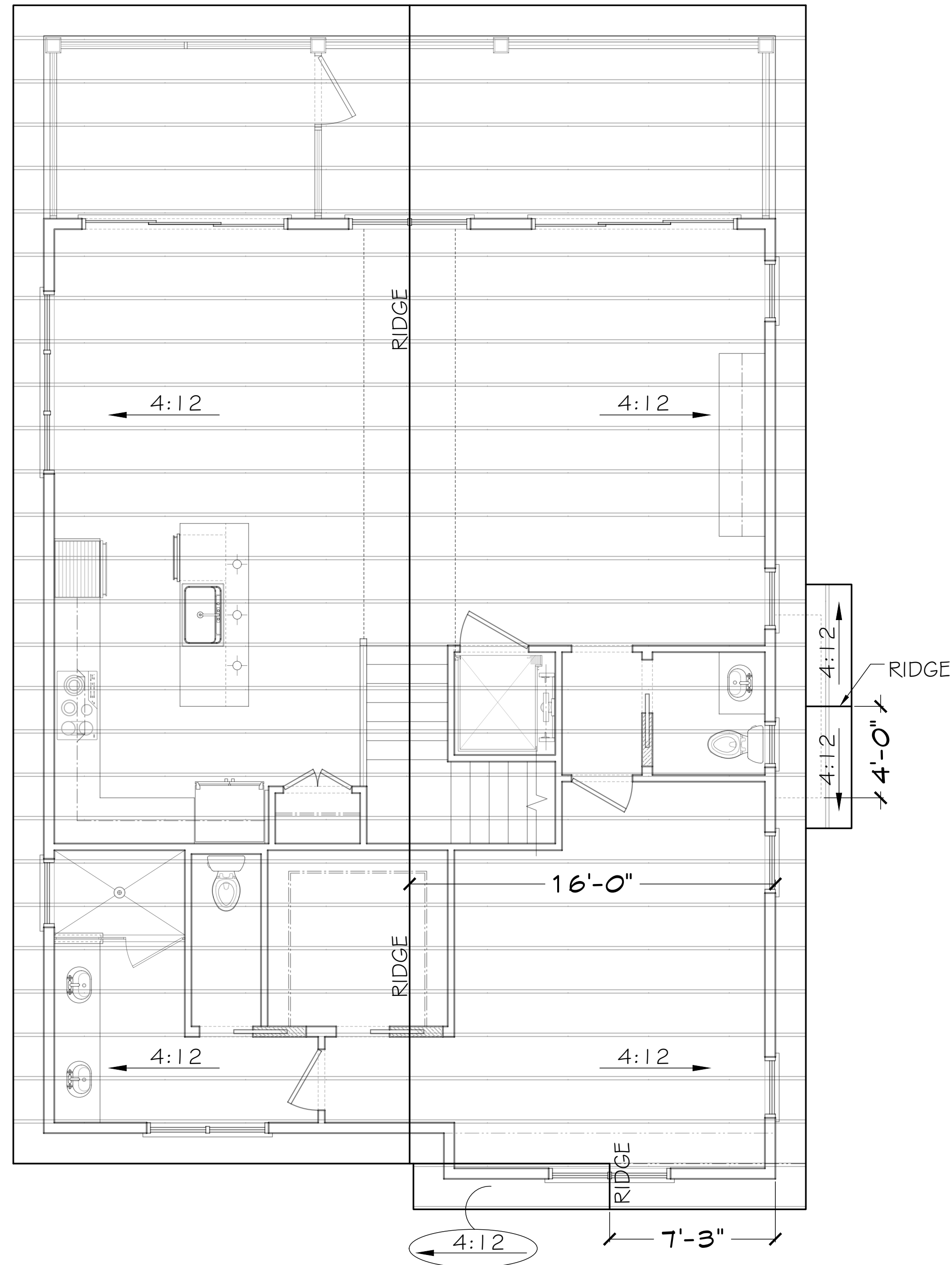
TYPICAL WALL SECTION
NOT TO SCALE



70 Ground Floor Heated Sq. Ft.
1296 First Floor Heated Sq. Ft.
1309 Second Floor Heated Sq. Ft.
2675 Total Heated Sq. Ft.
772 Garage Sq. Ft.
256 Rear Porch Sq. Ft. (1st Floor)
157 Rear Porch Sq. Ft. (2nd Floor)
99 Screen Porch Sq. Ft. (2nd Floor)



70 Ground Floor Heated Sq. Ft.
1296 First Floor Heated Sq. Ft.
1309 Second Floor Heated Sq. Ft.
2675 Total Heated Sq. Ft.
772 Garage Sq. Ft.
256 Rear Porch Sq. Ft. (1st Floor)
157 Rear Porch Sq. Ft. (2nd Floor)
99 Screen Porch Sq. Ft. (2nd Floor)



ROOF FRAMING LAYOUT

SCALE: 1/4" = 1'-0"

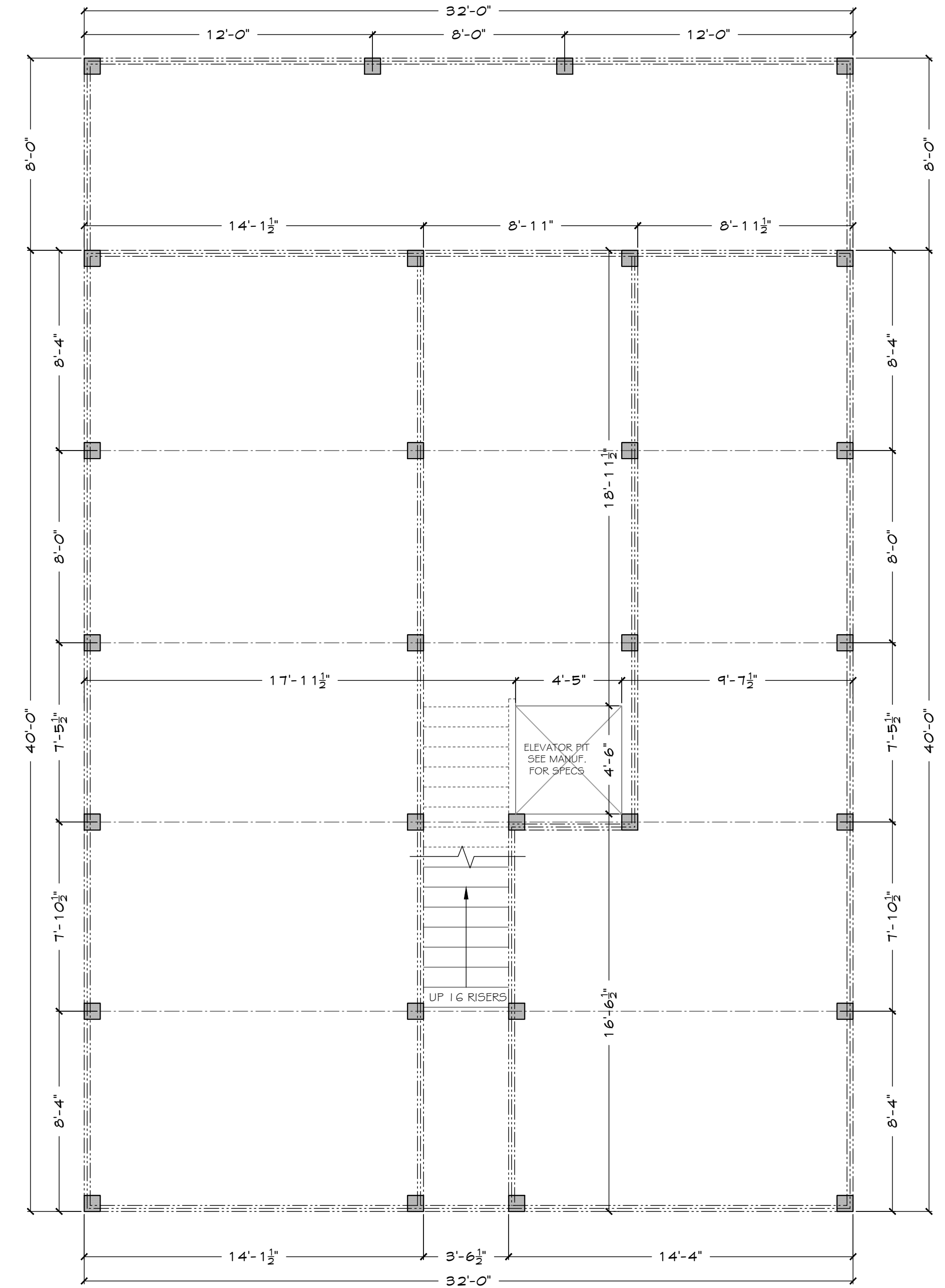
**** SEE ROOF TRUSS MANUFACTURER FOR ROOF FRAMING REQUIREMENTS ****

NOTES:

1. ALL ROOF PITCHES ARE AS NOTED
2. ALL DIMENSIONS ARE FROM FRAMING TO CENTER LINE OF RIDGE.
3. ALL RIDGES, HIPS, AND VALLEYS ARE TO BE SIZED BY OTHERS
4. OVERHANGS ARE TO BE 1'-0" FROM FACE OF FRAMING

ATTIC VENTILATION

REQUIRED:	
1792	Sq. Ft. of ATTIC / 300 = 5.97 Sq. Ft. EACH of INLET and OUTLET
PROVIDED:	
INLET: .07	Sq. Ft. PER LINEAR Ft. of VENT X .86 LINEAR Ft. = 6.02 Sq. Ft. of VENT
(RIDGE VENT)	of VENT
OUTLET: .11	Sq. Ft. PER LINEAR Ft. of VENT X .55 LINEAR Ft. = 6.05 Sq. Ft. of VENT
	of VENT
<ul style="list-style-type: none"> • CALCULATIONS SHOWN ARE BASED ON VENTILATORS USED AT A MINIMUM OF 3 Ft. ABOVE THE CORNICE VENTS or VAPOR BARRIER IS INSTALLED ON THE WARM IN WINTER SIDE OF THE CEILING (SEE R900.2 RESIDENTIAL CODE) • CATHEDRAL CEILINGS SHALL HAVE A 1" MINIMUM CLEARANCE BETWEEN BOTTOM CHORD OF ROOF AND INSULATION 	



FOUNDATION PLAN

SCALE: 1/4" = 1'-0"

NOTES:

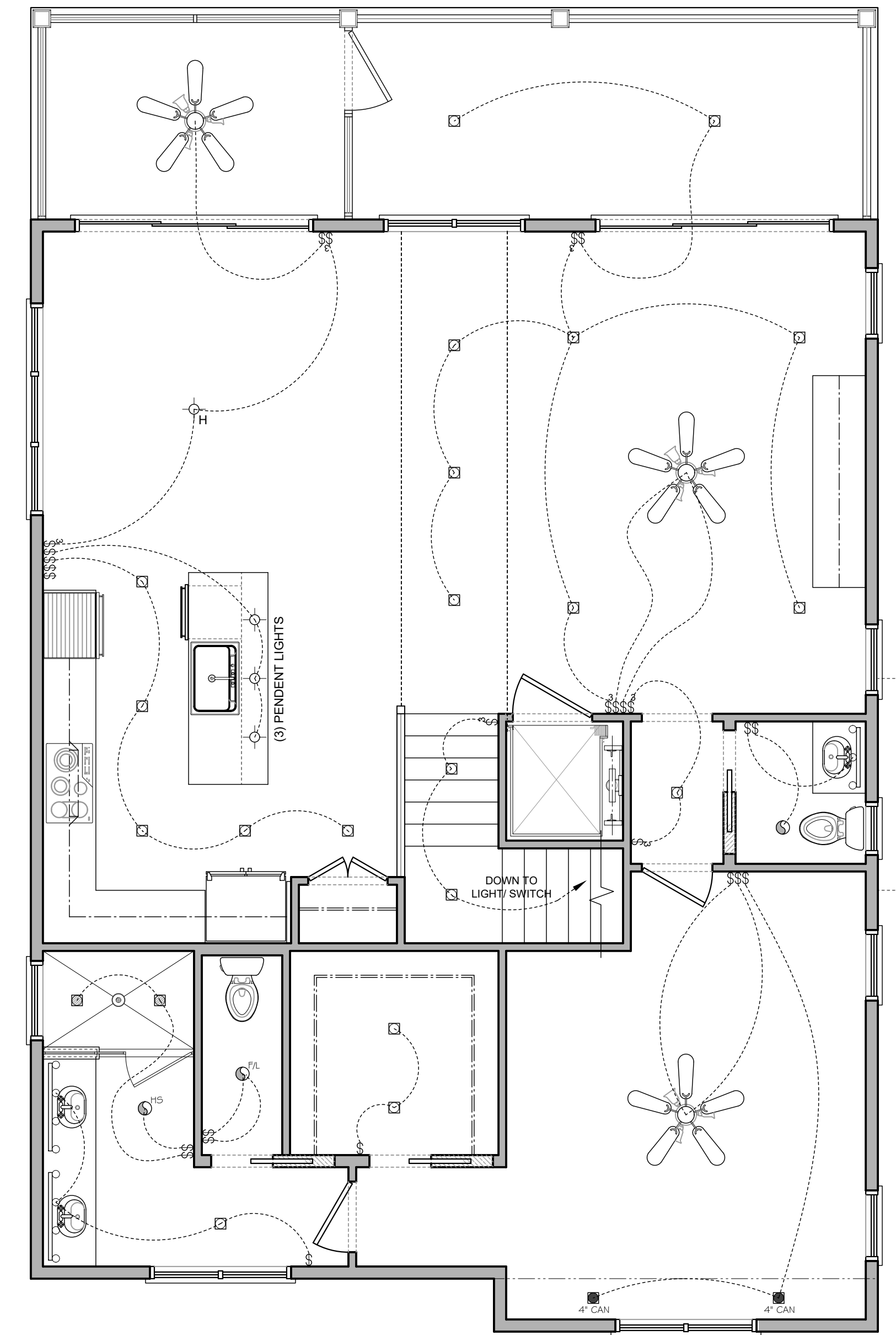
1. ALL DIMENSIONS ARE TO EXTERIOR OF FOUNDATION WALL
2. ALL LOCAL CODES GOVERN OVER ANY DIMENSIONS & SHOULD BE VERIFIED PRIOR TO A CONSTRUCTION START
3. SEE SHEET ENGINEERING SHEETS FOR DETAILS

70	Ground Floor Heated Sq. Ft.
1296	First Floor Heated Sq. Ft.
1309	Second Floor Heated Sq. Ft.
2675	Total Heated Sq. Ft.
772	Garage Sq. Ft.
256	Rear Porch Sq. Ft. (1st Floor)
157	Rear Porch Sq. Ft. (2nd Floor)
99	Screen Porch Sq. Ft. (2nd Floor)

* ELECTRICAL NOTE *
ALL RECEPTACLES, WIRING, FANS, SMOKE DETECTORS, ETC. NOT SHOWN OR INDICATED SHOULD BE INSTALLED IN ACCORDANCE w/ THE NATIONAL ELECTRICAL CODE.

ALL SWITCH LOCATIONS & WIRING DIAGRAMS ARE FOR GENERAL PLACEMENT ONLY & DO NOT INDICATE ACTUAL WIRING LAYOUT. SWITCHES SHOULD BE WIRED IN ACCORDANCE w/ LOCAL & INDUSTRY STANDARDS & THE NATIONAL ELECTRICAL CODE.

ELECTRICAL LEGEND	
	- LIGHT FIXTURE
	- LED FLAT
	- 6" RECESSED CAN
	- WATERPROOF 6" RECESSED CAN
	- 4" RECESSED CAN
	- EXHAUST FAN
	- FAN w/ HUMIDITY SENSING (EXHAUST FAN SUPPLIED BY HVAC)
	- SINGLE PULL SWITCH
	- 3-WAY SWITCH
	- 4-WAY SWITCH
	- DIMMER SWITCH
	- PUSH BUTTON SWITCH-(EX. GARAGE DOOR)
	- DUPLEX RECEPTACLE (110V)
	- 220 VOLT RECEPTACLE
	- SWITCHED RECEPTACLE (TOP WIRE ONLY)
	- GROUND FAULT CIRCUIT INTERRUPTER
	- WATERPROOF OUTLET
	- CEILING FAN PER SELECTION
	- VANITY LIGHT PER SELECTIONS
	- FLUORESCENT LIGHTING
	- FLOOD LIGHTS
	- EYEBALL SPOTS
	- CHIME - DOOR BELL
	- THERMOSTAT
	- SMOKE DETECTOR
	- CABLE OUTLET
	- TELEPHONE OUTLET
	- DATA OUTLET
	- INTERCOM
NOTE: ALL ELECTRICAL TO BE VERIFIED BY OWNER/BUILDER BEFORE ROUGH-IN.	

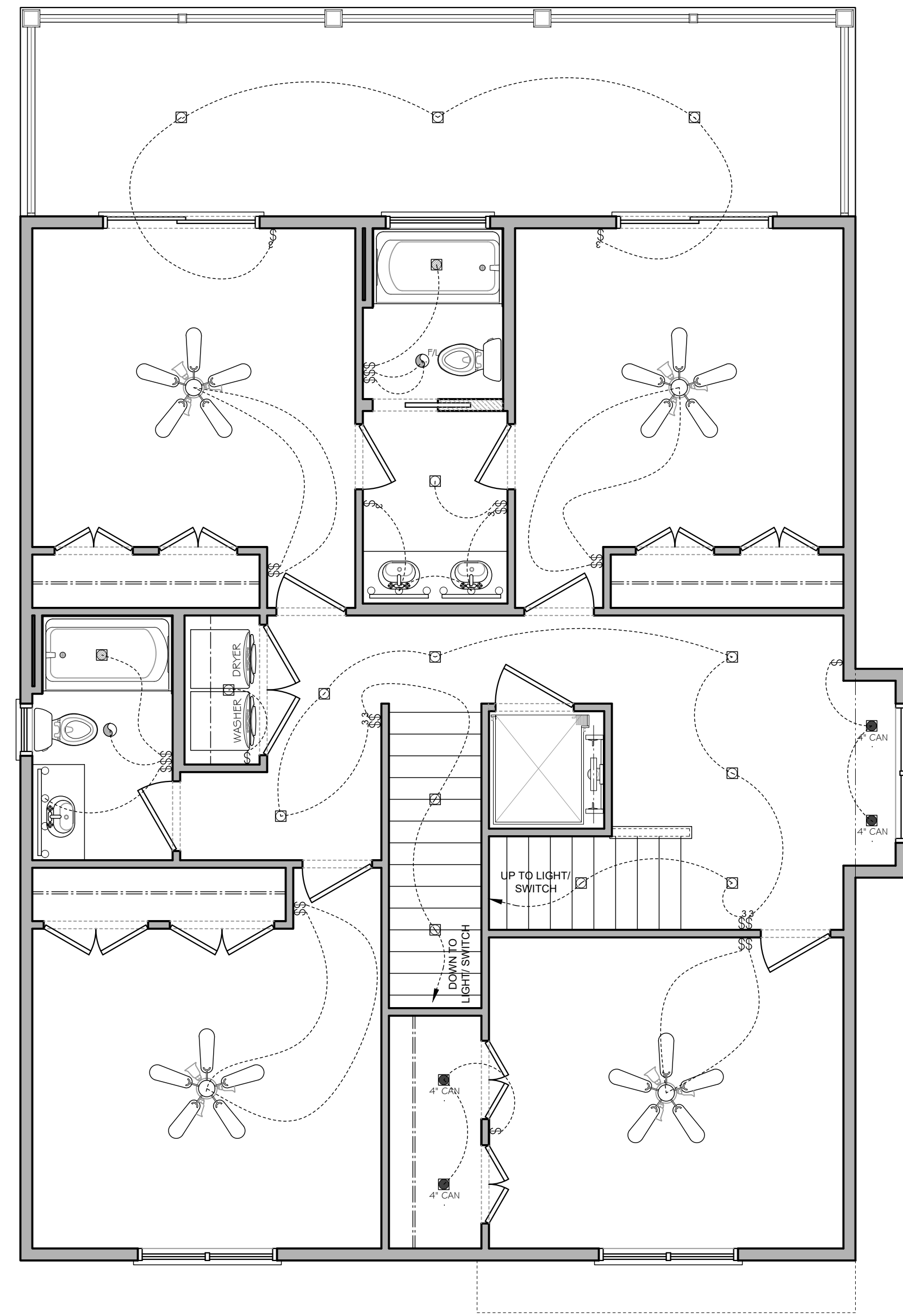


2nd FLOOR ELECTRICAL LAYOUT

SCALE: 1/4" = 1'-0"

** LOCATION OF ALL FIXTURES, RECEPTACLES & SWITCHES ARE APPROXIMATE and LOCATION MAY VARY DUE TO SITE CONDITIONS **

TYPICAL NOTES:
- LOCATION OF RECEPTACLES TO BE LOCATED ON SITE and MUST MEET LOCAL ELECTRICAL CODES
- LOCATION OF THERMOSTATS TO BE LOCATED ON SITE
- LOCATION OF SMOKE DETECTORS TO BE LOCATED PER LOCAL CODES

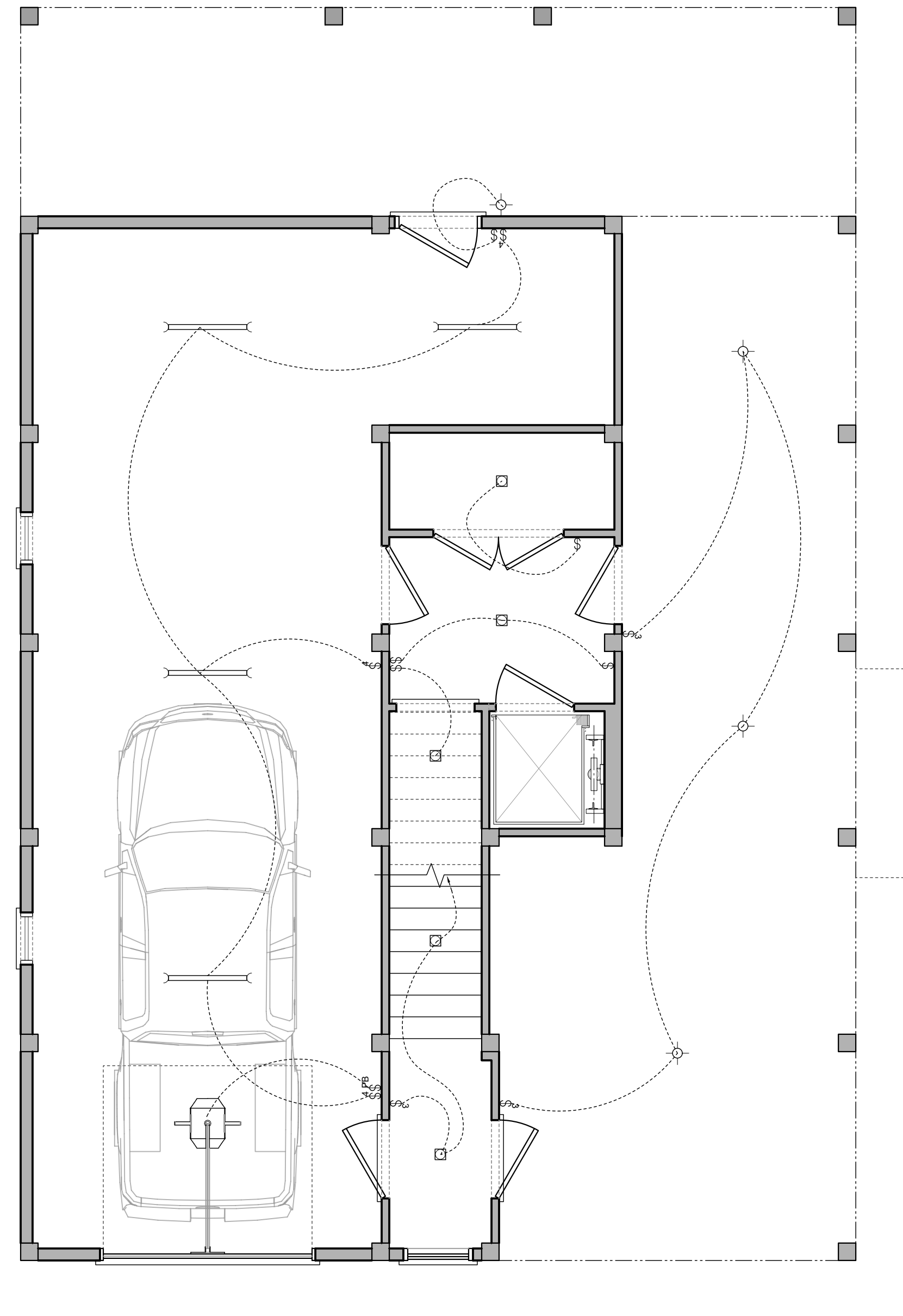


1st FLOOR ELECTRICAL LAYOUT

SCALE: 1/4" = 1'-0"

** LOCATION OF ALL FIXTURES, RECEPTACLES & SWITCHES ARE APPROXIMATE and LOCATION MAY VARY DUE TO SITE CONDITIONS **

TYPICAL NOTES:
- LOCATION OF RECEPTACLES TO BE LOCATED ON SITE and MUST MEET LOCAL ELECTRICAL CODES
- LOCATION OF THERMOSTATS TO BE LOCATED ON SITE
- LOCATION OF SMOKE DETECTORS TO BE LOCATED PER LOCAL CODES



GROUND FLOOR ELECTRICAL LAYOUT

SCALE: 1/4" = 1'-0"

** LOCATION OF ALL FIXTURES, RECEPTACLES & SWITCHES ARE APPROXIMATE and LOCATION MAY VARY DUE TO SITE CONDITIONS **

TYPICAL NOTES:
- LOCATION OF RECEPTACLES TO BE LOCATED ON SITE and MUST MEET LOCAL ELECTRICAL CODES
- LOCATION OF THERMOSTATS TO BE LOCATED ON SITE
- LOCATION OF SMOKE DETECTORS TO BE LOCATED PER LOCAL CODES

70 Ground Floor Heated Sq. Ft.
1296 First Floor Heated Sq. Ft.
1309 Second Floor Heated Sq. Ft.
2675 Total Heated Sq. Ft.
772 Garage Sq. Ft.
256 Rear Porch Sq. Ft. (1st Floor)
157 Rear Porch Sq. Ft. (2nd Floor)
99 Screen Porch Sq. Ft. (2nd Floor)

DATE:	27 February 2025
REVISED:	14 March 2025
PLAN #	5201 E. Pelican Dr.
SHEET NO.:	E1