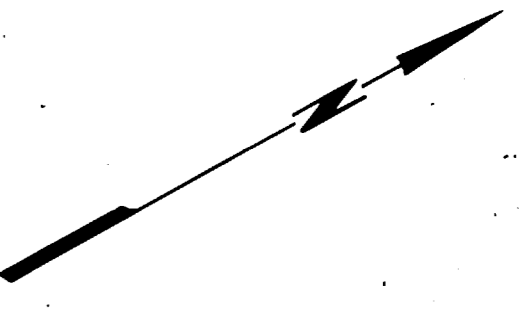


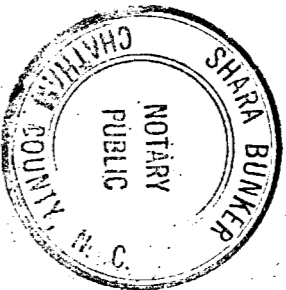
192-B



Filed for registration 2:15 P
February 5 1979 in the
Register of Deeds Office of Wake
County and Registered 4:00 P
February 5 1979 in the
County Clerk's Office of
Wake County, North Carolina
Shirley Bunker
Notary Public

NORTH CAROLINA - FIDUCIARY COUNTY
The foregoing is a correct and true
copy of the original of the
Map of
SEVEN LAKES WEST
CRESTVIEW SECTION
MINERAL SPRINGS TWP., MOORE CO., N.C.
as certified to be
correct, this February 5, 1979
Shirley Bunker
Notary Public

SEVEN LAKES WEST
CRESTVIEW SECTION
MINERAL SPRINGS TWP., MOORE CO., N.C.
OWNER AND DEVELOPER
LONGLEAF INC
P.O. BOX 319
WEST END, N.C.



I, SHARLA BUNKER, DO HEREBY CERTIFY THAT
LARRY K. ALLEN, SURVEYOR APPEARED BEFORE ME
AND ACKNOWLEDGED THE DUE EXECUTION OF THIS
MAP.
DATE 1/25/79
Sharla Bunker
NOTARY PUBLIC
MY COMMISSION EXPIRES 6/1/81

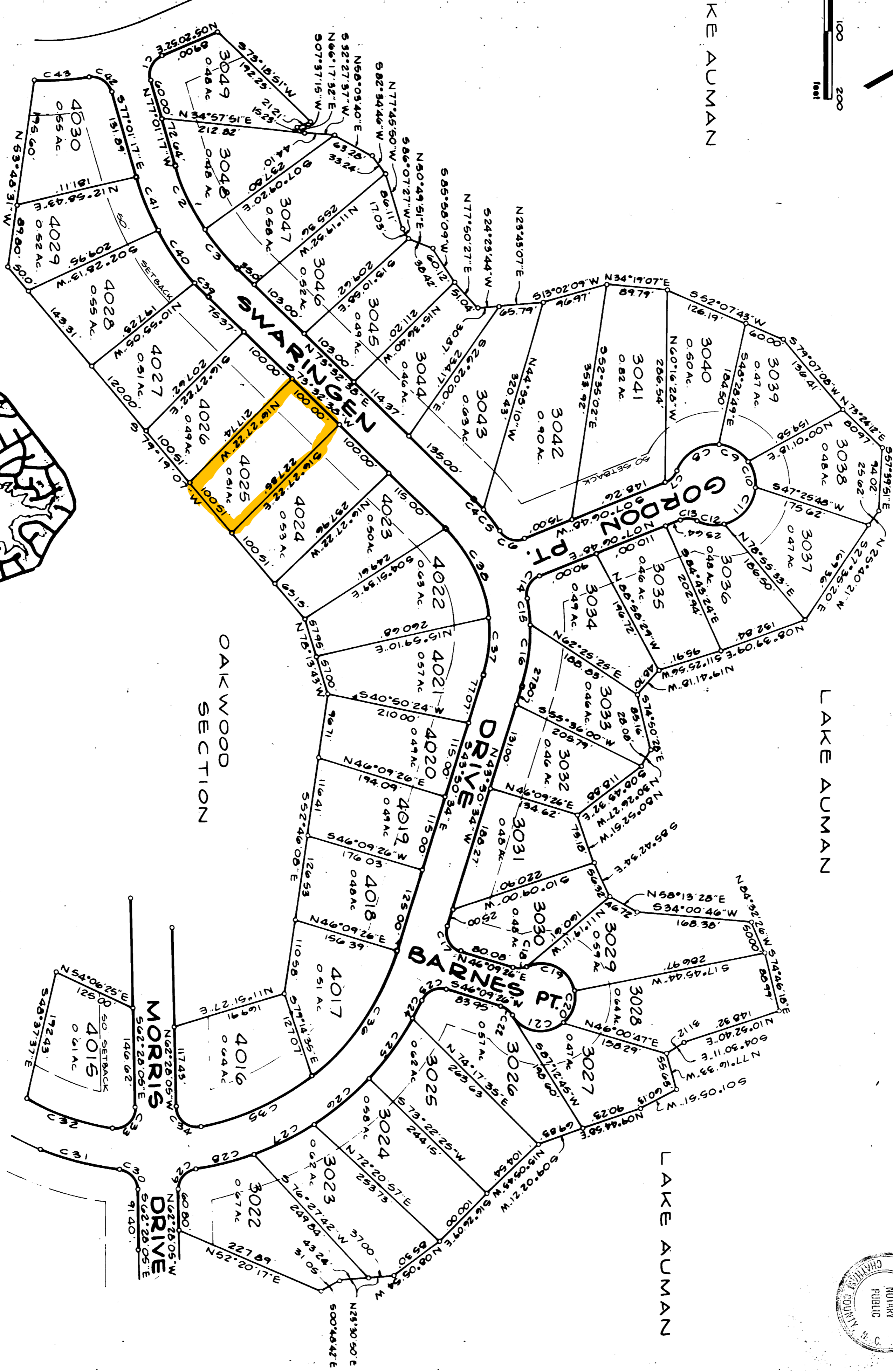
LAKE AUMAN

LAKE AUMAN

LAKE AUMAN

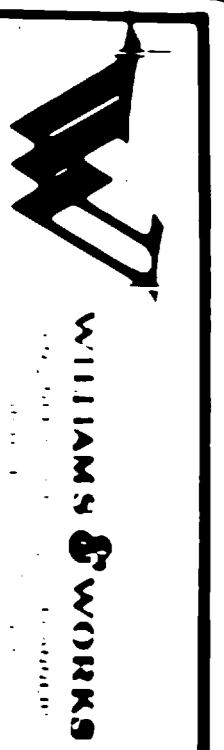
WOODROW
SECTION

OAKWOOD
SECTION



NOTE: IRON PIPES SET AT ALL
LOT CORNERS UNLESS
OTHERWISE NOTED
60' STREET R/W UNLESS
OTHERWISE NOTED
D CONCRETE CONTROL
MONUMENT
50' MIN BLDG SETBACK
FROM HIGH WATER LINE

C	BRG	CH	RAD	ARC
1	N 35° 50' 13" W	59.51'	30.00'	43.13'
2	N 85° 56' 45" W	104.75'	35.07'	105.17'
3	S 79° 40' 13" W	74.86'	35.07'	75.00'
4	N 75° 56' 54" E	20.15'	27.64'	20.00'
5	N 01° 50' 54" E	40.15'	27.64'	40.19'
6	S 44° 53' 42" W	5.12'	50.00'	41.31'
7	S 16° 58' 55" E	24.49'	30.00'	25.25'
8	N 05° 02' 59" W	75.95'	60.00'	79.65'
9	N 59° 36' 17" E	50.00'	60.00'	51.57'
10	S 76° 17' 57" E	40.00'	60.00'	40.75'
11	S 20° 14' 02" E	71.54'	60.00'	76.64'
12	S 95° 49' 54" W	40.00'	60.00'	40.75'
13	N 31° 12' 27" E	24.49'	30.00'	25.25'
14	S 92° 09' 17" W	57.95'	50.00'	41.12'
15	S 67° 18' 18" E	59.75'	27.64'	59.76'
16	S 53° 30' 54" E	42.45'	27.64'	47.12'
17	N 85° 50' 34" W	42.45'	30.00'	47.12'
18	S 28° 27' 07" W	21.21'	30.00'	21.66'
19	N 55° 58' 30" E	77.96'	50.00'	89.41'
20	S 42° 47' 52" E	50.00'	50.00'	62.86'
21	S 57° 25' 04" W	76.81'	50.00'	87.86'
22	N 66° 51' 45" E	21.21'	30.00'	21.66'
23	N 04° 50' 27" E	59.61'	30.00'	43.27'
24	S 54° 30' 44" E	30.00'	43.70'	30.01'
25	S 25° 20' 02" E	110.00'	43.70'	110.29'
26	S 11° 13' 48" E	105.00'	43.70'	105.25'
27	S 02° 12' 34" W	100.00'	43.70'	100.22'
28	S 14° 36' 30" W	89.15'	43.70'	89.31'
29	N 21° 00' 31" W	59.73'	30.00'	45.22'
30	N 76° 21' 32" E	39.50'	30.00'	43.12'
31	S 45° 08' 41" W	120.00'	43.70'	120.36'
32	S 47° 47' 48" W	130.53'	37.70'	131.19'
33	S 12° 18' 30" E	46.07'	30.00'	52.55'
34	S 67° 45' 37" W	45.81'	30.00'	52.12'
35	S 04° 12' 39" W	180.00'	37.70'	181.75'
36	S 26° 42' 18" E	222.71'	37.70'	226.07'
37	S 54° 55' 41" E	83.06'	21.64'	83.55'
38	S 56° 12' 05" E	150.00'	21.64'	153.17'
39	N 75° 17' 17" E	25.00'	41.07'	25.00'
40	N 85° 40' 24" E	95.00'	41.07'	95.00'
41	S 63° 21' 12" E	70.00'	41.07'	70.75'
42	N 61° 45' 16" E	59.57'	50.00'	43.21'
43	N 26° 04' 24" E	80.00'	40.92'	80.15'



REvised 1/25/79