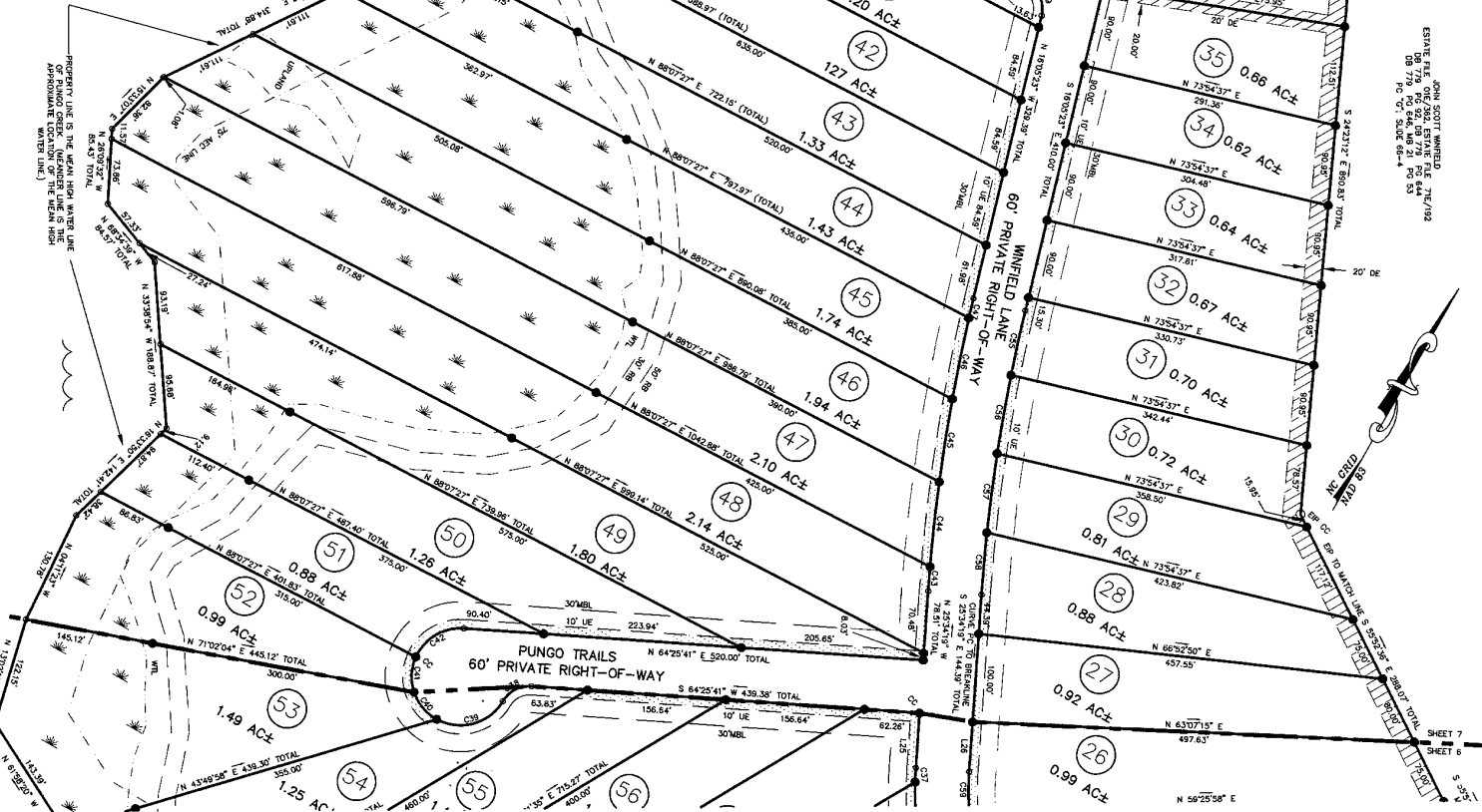


NORTH CAROLINA
BEAUFORT COUNTY
This Map/Plan was presented for registration and recorded in this office in Plain Cabinet, Slide 745
This day of 5th 2006 at 2:35 pm
Jennifer Leggett Whitehurst By *Caleb Hill*
Assist/Ordinary Register of Deeds

PUNGO CREEK

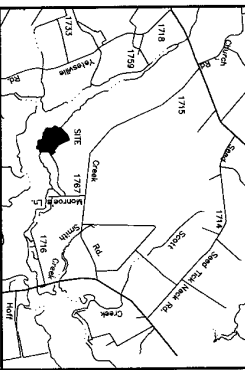


JOHN SCOTT WINFIELD
ESTATE PLAT
88 179 AC±
88 178 AC±
88 177 AC±
88 176 AC±
88 175 AC±
88 174 AC±
88 173 AC±
88 172 AC±
88 171 AC±
88 170 AC±
88 169 AC±
88 168 AC±
88 167 AC±
88 166 AC±
88 165 AC±
88 164 AC±
88 163 AC±
88 162 AC±
88 161 AC±
88 160 AC±
88 159 AC±
88 158 AC±
88 157 AC±
88 156 AC±
88 155 AC±
88 154 AC±
88 153 AC±
88 152 AC±
88 151 AC±
88 150 AC±
88 149 AC±
88 148 AC±
88 147 AC±
88 146 AC±
88 145 AC±
88 144 AC±
88 143 AC±
88 142 AC±
88 141 AC±
88 140 AC±
88 139 AC±
88 138 AC±
88 137 AC±
88 136 AC±
88 135 AC±
88 134 AC±
88 133 AC±
88 132 AC±
88 131 AC±
88 130 AC±
88 129 AC±
88 128 AC±
88 127 AC±
88 126 AC±
88 125 AC±
88 124 AC±
88 123 AC±
88 122 AC±
88 121 AC±
88 120 AC±
88 119 AC±
88 118 AC±
88 117 AC±
88 116 AC±
88 115 AC±
88 114 AC±
88 113 AC±
88 112 AC±
88 111 AC±
88 110 AC±
88 109 AC±
88 108 AC±
88 107 AC±
88 106 AC±
88 105 AC±
88 104 AC±
88 103 AC±
88 102 AC±
88 101 AC±
88 100 AC±
88 99 AC±
88 98 AC±
88 97 AC±
88 96 AC±
88 95 AC±
88 94 AC±
88 93 AC±
88 92 AC±
88 91 AC±
88 90 AC±
88 89 AC±
88 88 AC±
88 87 AC±
88 86 AC±
88 85 AC±
88 84 AC±
88 83 AC±
88 82 AC±
88 81 AC±
88 80 AC±
88 79 AC±
88 78 AC±
88 77 AC±
88 76 AC±
88 75 AC±
88 74 AC±
88 73 AC±
88 72 AC±
88 71 AC±
88 70 AC±
88 69 AC±
88 68 AC±
88 67 AC±
88 66 AC±
88 65 AC±
88 64 AC±
88 63 AC±
88 62 AC±
88 61 AC±
88 60 AC±
88 59 AC±
88 58 AC±
88 57 AC±
88 56 AC±
88 55 AC±
88 54 AC±
88 53 AC±
88 52 AC±
88 51 AC±
88 50 AC±
88 49 AC±
88 48 AC±
88 47 AC±
88 46 AC±
88 45 AC±
88 44 AC±
88 43 AC±
88 42 AC±
88 41 AC±
88 40 AC±
88 39 AC±
88 38 AC±
88 37 AC±
88 36 AC±
88 35 AC±
88 34 AC±
88 33 AC±
88 32 AC±
88 31 AC±
88 30 AC±
88 29 AC±
88 28 AC±
88 27 AC±
88 26 AC±
88 25 AC±
88 24 AC±
88 23 AC±
88 22 AC±
88 21 AC±
88 20 AC±
88 19 AC±
88 18 AC±
88 17 AC±
88 16 AC±
88 15 AC±
88 14 AC±
88 13 AC±
88 12 AC±
88 11 AC±
88 10 AC±
88 9 AC±
88 8 AC±
88 7 AC±
88 6 AC±
88 5 AC±
88 4 AC±
88 3 AC±
88 2 AC±
88 1 AC±

THIS DRAWING IS THE PROPERTY OF THE EAST GROUP, P.A. ANY USE, REUSE, REPRODUCTION, DISPLAY OR SALE OF THIS DRAWING WITHOUT WRITTEN CONSENT OF THE EAST GROUP, P.A. IS STRICTLY PROHIBITED.

NOTES:
1) ALL EXISTING UTILITIES ARE TO BE MAINTAINED AND PROTECTED. THE CONTRACTOR SHALL BE RESPONSIBLE FOR OBTAINING ALL NECESSARY PERMITS AND APPROVALS FROM THE APPLICABLE AGENCIES.
2) ALL UTILITIES SHALL BE DEEPENED TO A MINIMUM OF 48" BELOW FINISHED GRADE.
3) ALL UTILITIES SHALL BE PROTECTED BY A MINIMUM OF 18" OF SAND OR OTHER APPROVED MATERIAL.
4) THE CONTRACTOR SHALL BE RESPONSIBLE FOR OBTAINING ALL NECESSARY PERMITS AND APPROVALS FROM THE APPLICABLE AGENCIES.
5) THE CONTRACTOR SHALL BE RESPONSIBLE FOR OBTAINING ALL NECESSARY PERMITS AND APPROVALS FROM THE APPLICABLE AGENCIES.
6) THE CONTRACTOR SHALL BE RESPONSIBLE FOR OBTAINING ALL NECESSARY PERMITS AND APPROVALS FROM THE APPLICABLE AGENCIES.
7) ALL UTILITIES SHALL BE PROTECTED BY A MINIMUM OF 18" OF SAND OR OTHER APPROVED MATERIAL.
8) THE CONTRACTOR SHALL BE RESPONSIBLE FOR OBTAINING ALL NECESSARY PERMITS AND APPROVALS FROM THE APPLICABLE AGENCIES.
9) THE CONTRACTOR SHALL BE RESPONSIBLE FOR OBTAINING ALL NECESSARY PERMITS AND APPROVALS FROM THE APPLICABLE AGENCIES.
10) THE CONTRACTOR SHALL BE RESPONSIBLE FOR OBTAINING ALL NECESSARY PERMITS AND APPROVALS FROM THE APPLICABLE AGENCIES.

LEGEND
 EPK = EXISTING IRON PIPE
 EPK = EXISTING PK NAIL
 NIP = NEW 3/4" IRON PIPE
 AEC = AREA OF ENVIRONMENTAL CONCERN
 DE = DRAINAGE EASEMENT
 MB = MINIMUM BUILDING SETBACK LIMIT
 U = UTILITY SERVICE LINE
 W/L = WETLAND LINE
 CC = CONTROL CORNER
 C = CONTROL CORNER
 O = NOT POINT OF SET
 R/W = RIGHT-OF-WAY
 C = CENTERLINE



THE EAST GROUP
 324 S. EVANS ST., BOX 1325
 BEAUFORT, NC 28520
 *Engineering • Architecture • Surveying • Technology
 PROJECT NO.: 200605027
 DRAWN BY: SJP
 CHECKED BY: MMH/GJT
 DATE: MAY 25, 2006
 DRAWING NAME: mfl-phase1
 SCALE: 1" = 100'



REVIEW OFFICER
 DATE

LINE	LENGTH	BEARING	CURVE DATA	CHORD BEARING	CHORD LENGTH	PERCENTAGE	BEITL
C1	45.88	N 08°32'15" W	0.0000	N 08°32'15" W	45.88	0.0000	0.0000
C2	100.92	N 08°32'15" W	0.0000	N 08°32'15" W	100.92	0.0000	0.0000
C3	77.72	N 08°32'15" W	0.0000	N 08°32'15" W	77.72	0.0000	0.0000
C4	35.17	N 08°32'15" W	0.0000	N 08°32'15" W	35.17	0.0000	0.0000
C5	31.72	N 08°32'15" W	0.0000	N 08°32'15" W	31.72	0.0000	0.0000
C6	22.64	N 08°32'15" W	0.0000	N 08°32'15" W	22.64	0.0000	0.0000
C7	16.52	N 08°32'15" W	0.0000	N 08°32'15" W	16.52	0.0000	0.0000
C8	12.64	N 08°32'15" W	0.0000	N 08°32'15" W	12.64	0.0000	0.0000
C9	9.46	N 08°32'15" W	0.0000	N 08°32'15" W	9.46	0.0000	0.0000
C10	7.12	N 08°32'15" W	0.0000	N 08°32'15" W	7.12	0.0000	0.0000
C11	5.36	N 08°32'15" W	0.0000	N 08°32'15" W	5.36	0.0000	0.0000
C12	4.04	N 08°32'15" W	0.0000	N 08°32'15" W	4.04	0.0000	0.0000
C13	3.04	N 08°32'15" W	0.0000	N 08°32'15" W	3.04	0.0000	0.0000
C14	2.28	N 08°32'15" W	0.0000	N 08°32'15" W	2.28	0.0000	0.0000
C15	1.72	N 08°32'15" W	0.0000	N 08°32'15" W	1.72	0.0000	0.0000
C16	1.28	N 08°32'15" W	0.0000	N 08°32'15" W	1.28	0.0000	0.0000
C17	0.96	N 08°32'15" W	0.0000	N 08°32'15" W	0.96	0.0000	0.0000
C18	0.72	N 08°32'15" W	0.0000	N 08°32'15" W	0.72	0.0000	0.0000
C19	0.54	N 08°32'15" W	0.0000	N 08°32'15" W	0.54	0.0000	0.0000
C20	0.41	N 08°32'15" W	0.0000	N 08°32'15" W	0.41	0.0000	0.0000
C21	0.31	N 08°32'15" W	0.0000	N 08°32'15" W	0.31	0.0000	0.0000
C22	0.23	N 08°32'15" W	0.0000	N 08°32'15" W	0.23	0.0000	0.0000
C23	0.17	N 08°32'15" W	0.0000	N 08°32'15" W	0.17	0.0000	0.0000
C24	0.13	N 08°32'15" W	0.0000	N 08°32'15" W	0.13	0.0000	0.0000
C25	0.10	N 08°32'15" W	0.0000	N 08°32'15" W	0.10	0.0000	0.0000
C26	0.07	N 08°32'15" W	0.0000	N 08°32'15" W	0.07	0.0000	0.0000
C27	0.05	N 08°32'15" W	0.0000	N 08°32'15" W	0.05	0.0000	0.0000
C28	0.04	N 08°32'15" W	0.0000	N 08°32'15" W	0.04	0.0000	0.0000
C29	0.03	N 08°32'15" W	0.0000	N 08°32'15" W	0.03	0.0000	0.0000
C30	0.02	N 08°32'15" W	0.0000	N 08°32'15" W	0.02	0.0000	0.0000

BATH TOWNSHIP
BEAUFORT COUNTY
NORTH CAROLINA
MAY 25, 2006
WINFIELD ESTATES
PHASE I
SHEET 7 OF 7
FINAL PLAT