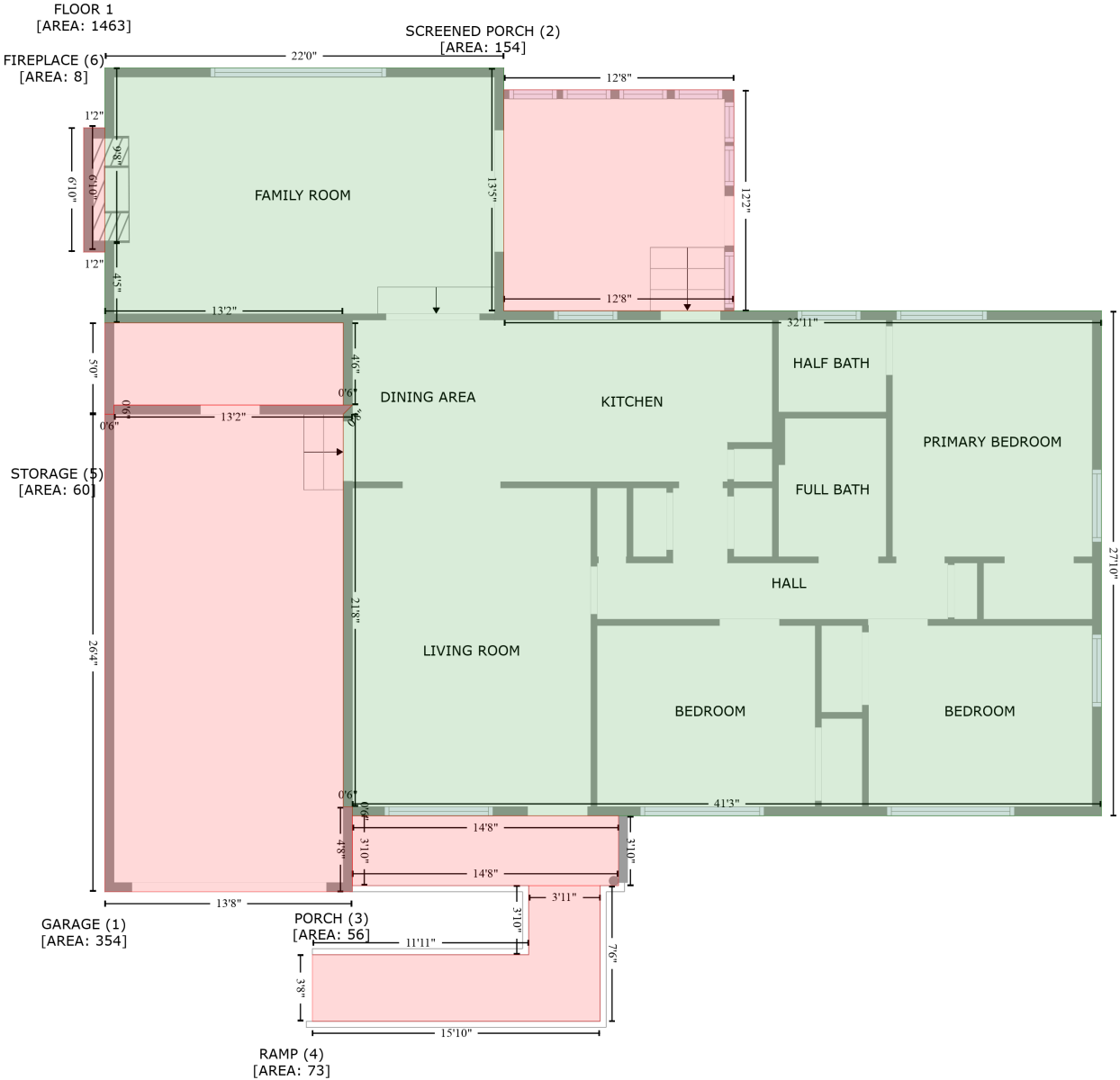


1 Lee Court, Humphrey, Pumpkin Center, Jacksonville, Onslow County, North Carolina, United States, 28546

Gross Living Area: 1463 sq. ft

Level 1



Space	Area (sq. ft)	Calculation
FLOOR 1 (Living area)	1463	Coordinate Polygon Area Algorithm using inches $-((262.7 + 262.7) * (-0.9 - 159.7) + (262.7 + 657.5) * (159.7 - 159.7) + (657.5 + 657.5) * (159.7 - 493.6) + (657.5 + 162.6) * (493.6 - 493.6) + (162.6 + 162.6) * (493.6 - 487.6) + (162.6 + 156.6) * (487.6 - 487.6) + (156.6 + 156.6) * (487.6 - 228) + (156.6 + 162.6) * (228 - 222) + (162.6 + 156.6) * (222 - 222) + (156.6 + 156.6) * (222 - 167.7) + (156.6 + -0.9) * (167.7 - 167.7) + (-0.9 + -0.9) * (167.7 - 114.9) + (-0.9 + -0.9) * (114.9 - -0.9) + (-0.9 + 262.7) * (-0.9 - -0.9)) * 0.5 * 0.00694$

1 Lee Court, Humphrey, Pumpkin Center, Jacksonville, Onslow County, North Carolina, United States, 28546

Gross Living Area: 1463 sq. ft

Level 1

Space	Area (sq. ft)	Calculation <small>Coordinate Polygon Area Algorithm using inches</small>
GARAGE (Non-living area)	354	$-\left((162.6 + 156.6) * (222 - 228) + (156.6 + 156.6) * (228 - 487.6) + (156.6 + 162.6) * (487.6 - 487.6) + (162.6 + 162.6) * (487.6 - 543.8) + (162.6 + -0.9) * (543.8 - 543.8) + (-0.9 + -0.9) * (543.8 - 228) + (-0.9 + 5.1) * (228 - 228) + (5.1 + 5.1) * (228 - 222) + (5.1 + 162.6) * (222 - 222)\right) * 0.5 * 0.00694$
SCREENED PORCH (Non-living area)	154	$-\left((414.7 + 414.7) * (13.6 - 159.7) + (414.7 + 262.7) * (159.7 - 159.7) + (262.7 + 262.7) * (159.7 - 13.6) + (262.7 + 414.7) * (13.6 - 13.6)\right) * 0.5 * 0.00694$
PORCH (Non-living area)	56	$-\left((338.5 + 338.5) * (493.6 - 539.8) + (338.5 + 162.6) * (539.8 - 539.8) + (162.6 + 162.6) * (539.8 - 493.6) + (162.6 + 338.5) * (493.6 - 493.6)\right) * 0.5 * 0.00694$
RAMP (Non-living area)	73	$-\left((326.3 + 326.3) * (539.8 - 629.5) + (326.3 + 136.2) * (629.5 - 629.5) + (136.2 + 136.2) * (629.5 - 585.4) + (136.2 + 279.1) * (585.4 - 585.4) + (279.1 + 279.1) * (585.4 - 539.8) + (279.1 + 326.3) * (539.8 - 539.8)\right) * 0.5 * 0.00694$
STORAGE (Non-living area)	60	$-\left((156.6 + 156.6) * (167.7 - 222) + (156.6 + 5.1) * (222 - 222) + (5.1 + 5.1) * (222 - 228) + (5.1 + -0.9) * (228 - 228) + (-0.9 + -0.9) * (228 - 167.7) + (-0.9 + 156.6) * (167.7 - 167.7)\right) * 0.5 * 0.00694$
FIREPLACE (Non-living area)	8	$-\left((-0.9 + -0.9) * (38.7 - 120.9) + (-0.9 + -14.9) * (120.9 - 120.9) + (-14.9 + -14.9) * (120.9 - 38.7) + (-14.9 + -0.9) * (38.7 - 38.7)\right) * 0.5 * 0.00694$