



**ANN B. FAIRCLOTH**  
DS 1312 PG 73

**ERLY PEREZ**  
1342 PG 535

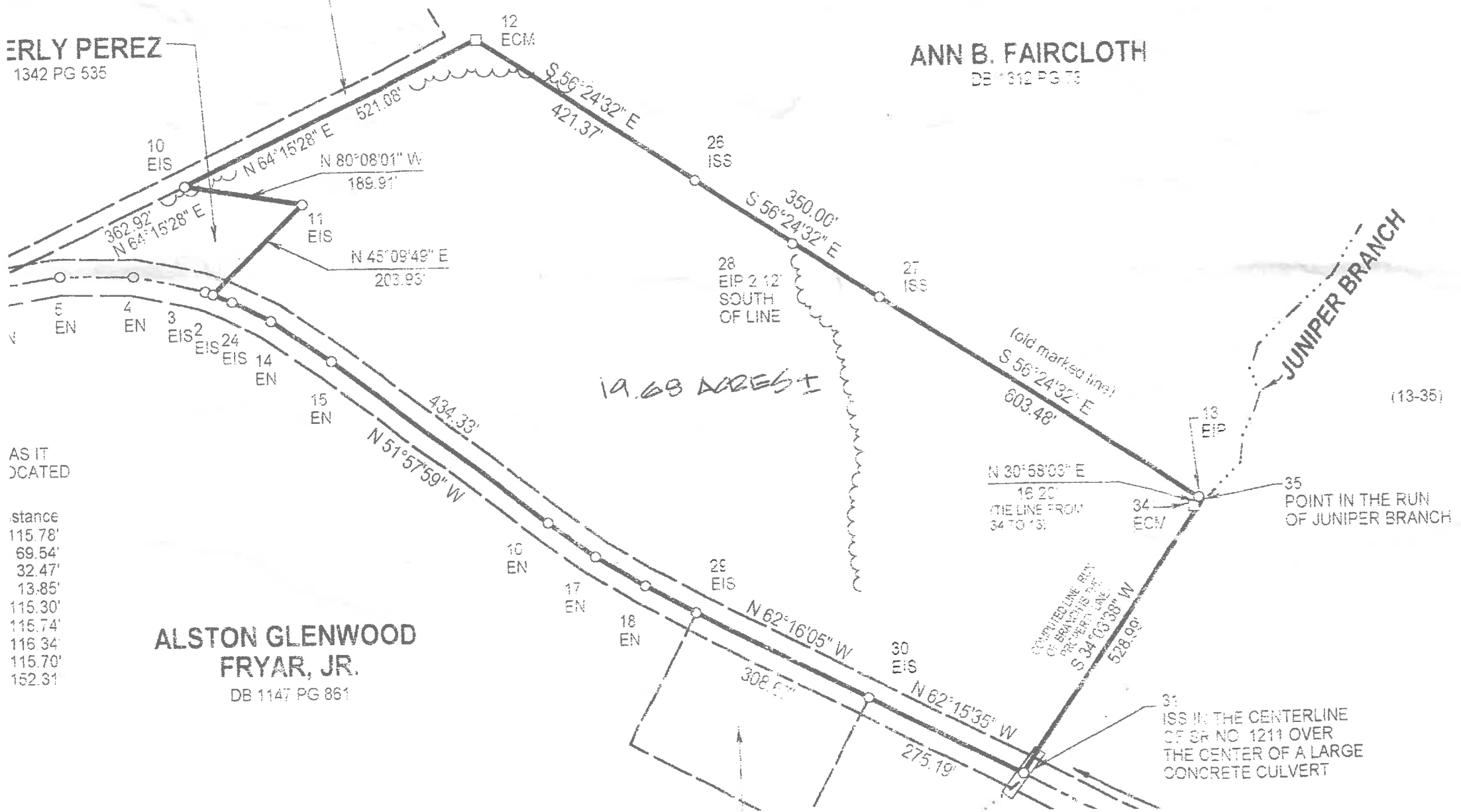
**ANN B. FAIRCLOTH**  
DB 1312 PG 73

AS IT  
LOCATED

- Distance
- 115.78'
- 69.54'
- 32.47'
- 13.85'
- 115.30'
- 115.74'
- 116.34'
- 115.70'
- 152.31'

**ALSTON GLENWOOD  
FRYAR, JR.**  
DB 1147 PG 861

**DUBOSE STEEL**  
DB 1115 PG 786



*19.68 ACRES ±*

**JUNIPER BRANCH**

31  
ISS IN THE CENTERLINE  
OF SR NO 1211 OVER  
THE CENTER OF A LARGE  
CONCRETE CULVERT

N 30° 58' 03" E  
18.20'  
(TIE LINE FROM  
34 TO 13)

COMPUTED LINE RUN  
BY BRACKET'S FILE  
S 34° 03' 38" W  
528.99'

35  
POINT IN THE RUN  
OF JUNIPER BRANCH

(old marked line)  
S 56° 24' 32" E  
603.48'

28  
EIP 2.12'  
SOUTH  
OF LINE

308.5'

275.19'

N 62° 16' 05" W

N 62° 15' 35" W

N 51° 57' 59" W

434.33'

10 EN

17 EN

18 EN

30 EIS

29 EIS

34 ECM

13 EIP

27 ISS

26 ISS

15 EN

14 EN

24 EIS

2 EIS

10 EIS

11 EIS

12 ECM

S 56° 24' 32" E  
421.37'

N 80° 08' 01" W  
189.91'

N 45° 09' 49" E  
203.95'

362.92'  
N 64° 15' 28" E

521.08'  
N 64° 15' 28" E

5 EN

4 EN

3 EN

2 EN