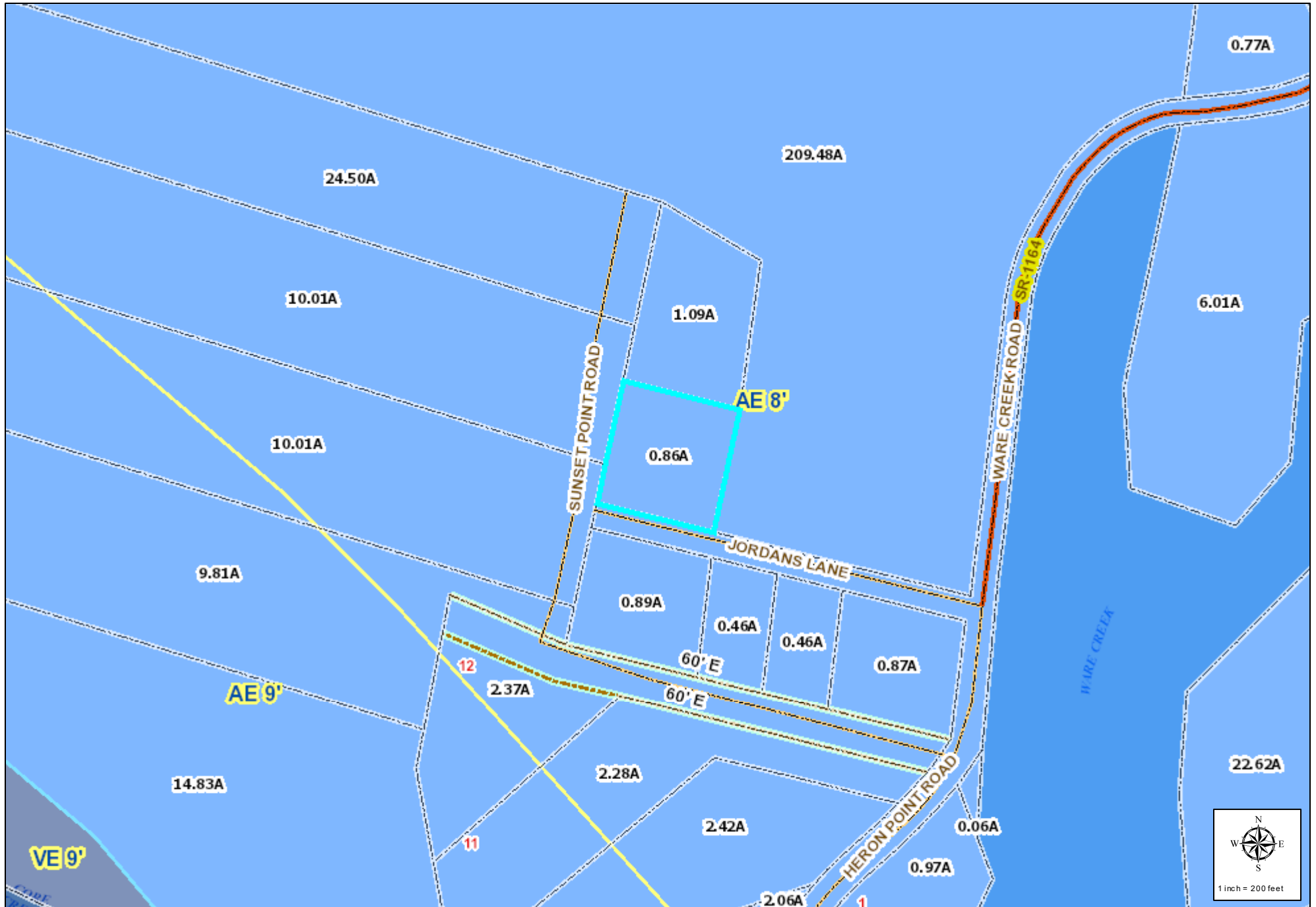


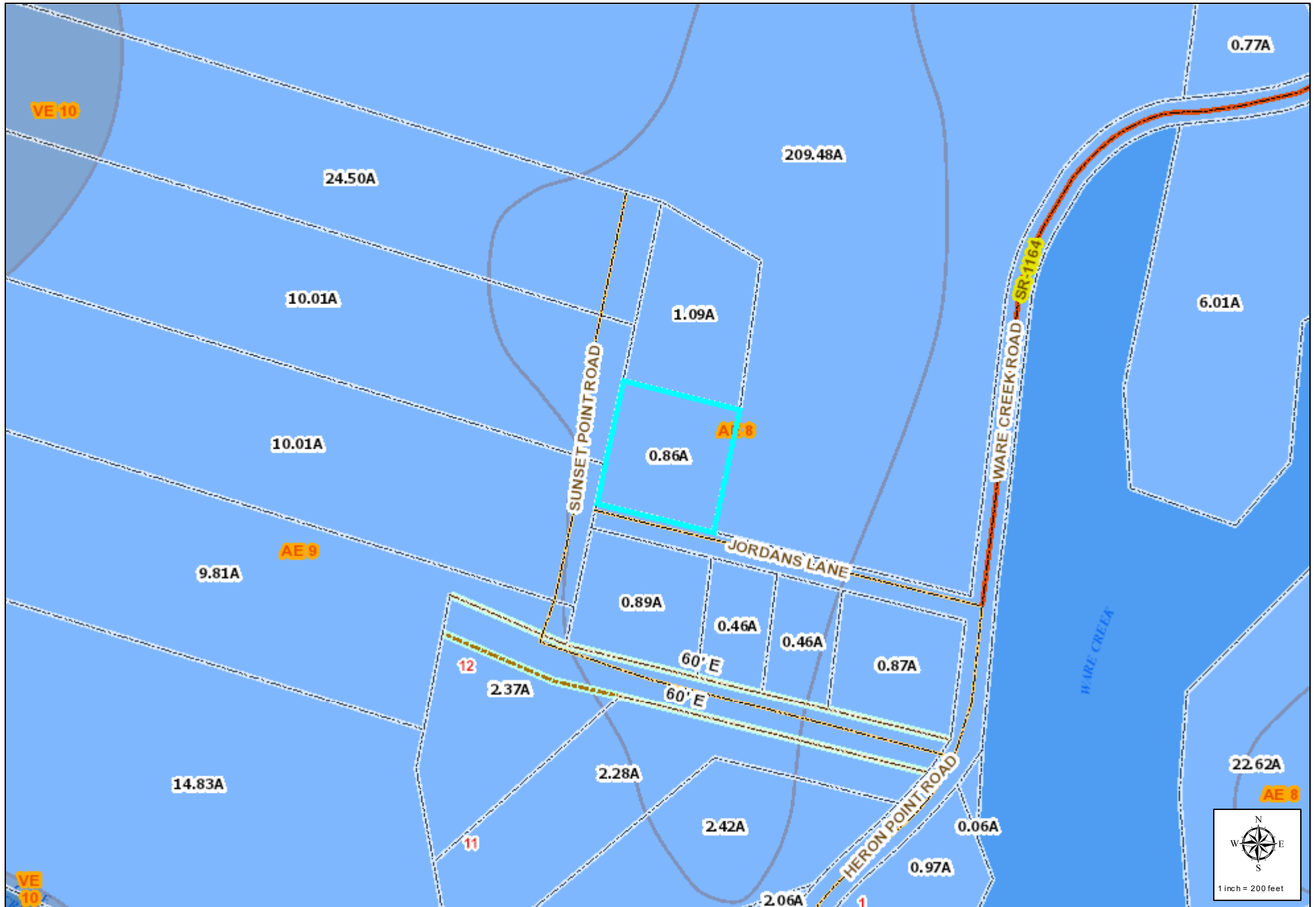
Carteret County, N.C.



January 9, 2026

Effective Flood Map

The information displayed by this website is prepared for the inventory of real property found within this jurisdiction and is compiled from recorded deeds, plats, and other public records and data. Users of this information are hereby notified that the aforementioned public primary information sources should be consulted for verification of the information contained on this site. Carteret County assumes no legal responsibility for the information contained on this site. Carteret County does not guarantee that the data and map services will be available to users without interruption or error. Furthermore, Carteret County may modify or remove map services and access methods at will.



January 9, 2026

Preliminary Flood Map

The information displayed by this website is prepared for the inventory of real property found within this jurisdiction and is compiled from recorded deeds, plats, and other public records and data. Users of this information are hereby notified that the aforementioned public primary information sources should be consulted for verification of the information contained on this site. Carteret County assumes no legal responsibility for the information contained on this site. Carteret County does not guarantee that the data and map services will be available to users without interruption or error. Furthermore, Carteret County may modify or remove map services and access methods at will.

Carteret County, N.C.

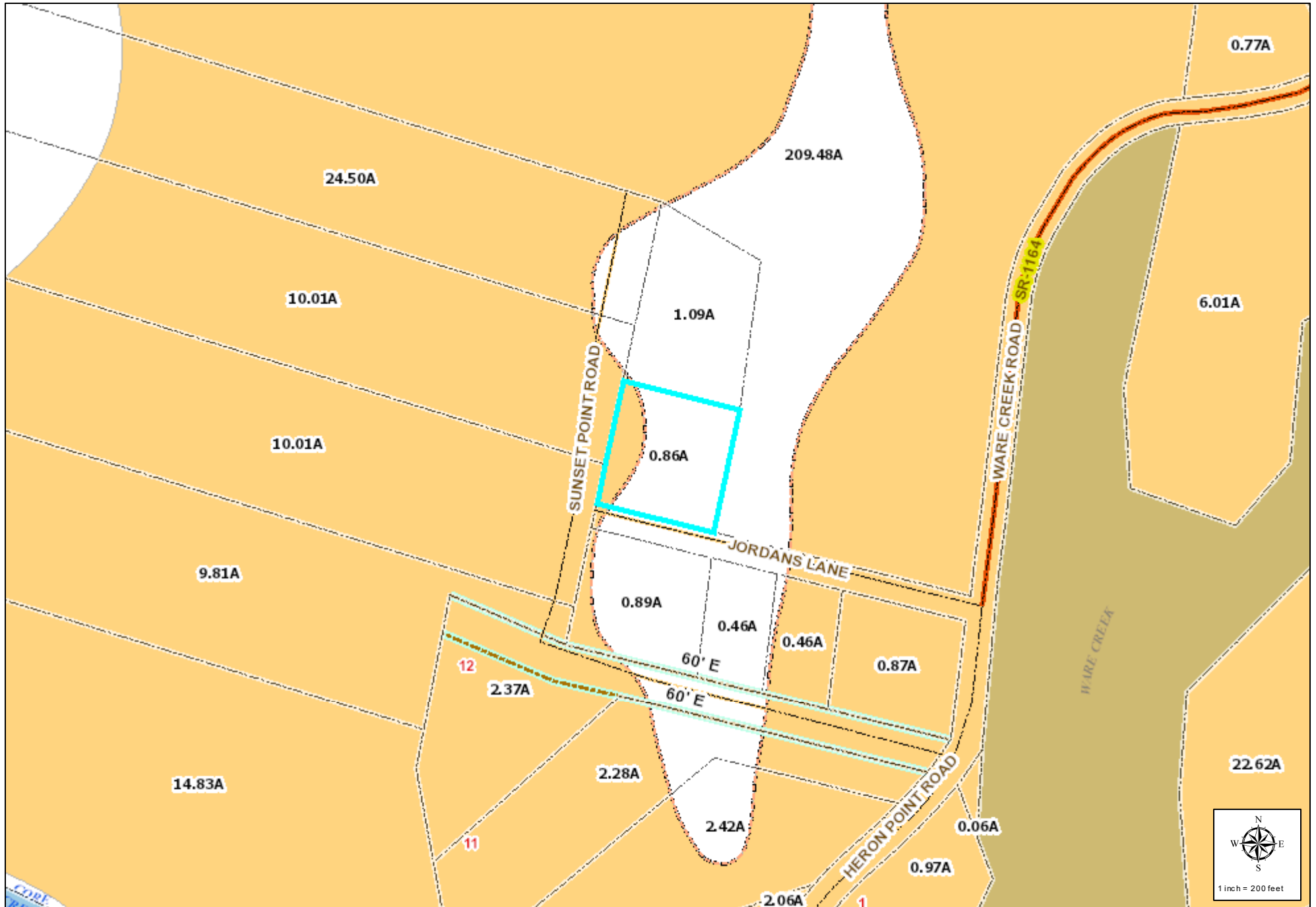


January 9, 2026

Effective LiMWA Map

The information displayed by this website is prepared for the inventory of real property found within this jurisdiction and is compiled from recorded deeds, plats, and other public records and data. Users of this information are hereby notified that the aforementioned public primary information sources should be consulted for verification of the information contained on this site. Carteret County assumes no legal responsibility for the information contained on this site. Carteret County does not guarantee that the data and map services will be available to users without interruption or error. Furthermore, Carteret County may modify or remove map services and access methods at will.

Carteret County, N.C.



January 9, 2026

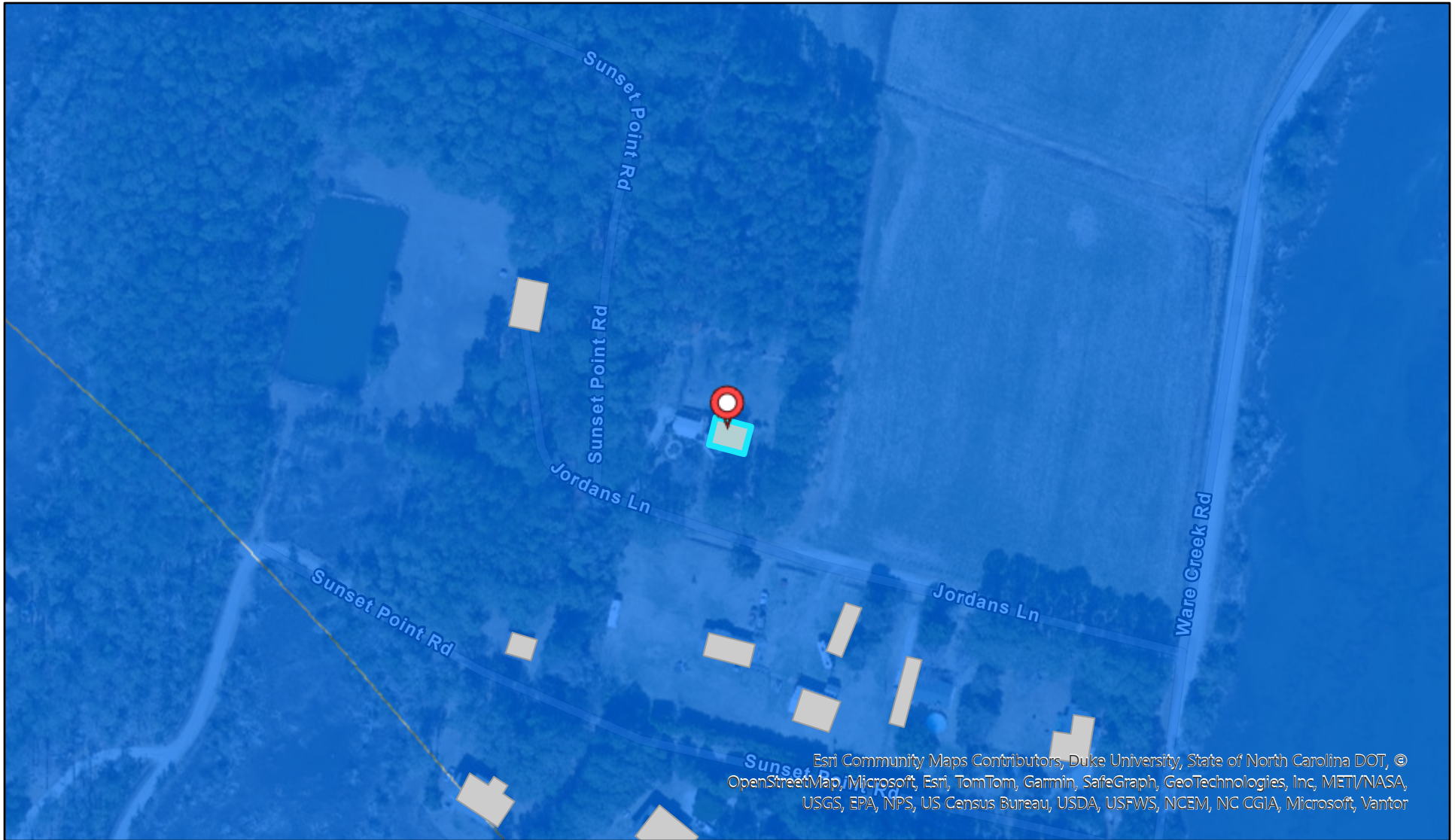
Preliminary LiMWA Map

The information displayed by this website is prepared for the inventory of real property found within this jurisdiction and is compiled from recorded deeds, plats, and other public records and data. Users of this information are hereby notified that the aforementioned public primary information sources should be consulted for verification of the information contained on this site. Carteret County assumes no legal responsibility for the information contained on this site. Carteret County does not guarantee that the data and map services will be available to users without interruption or error. Furthermore, Carteret County may modify or remove map services and access methods at will.



Effective FRIS

Jan 9, 2026

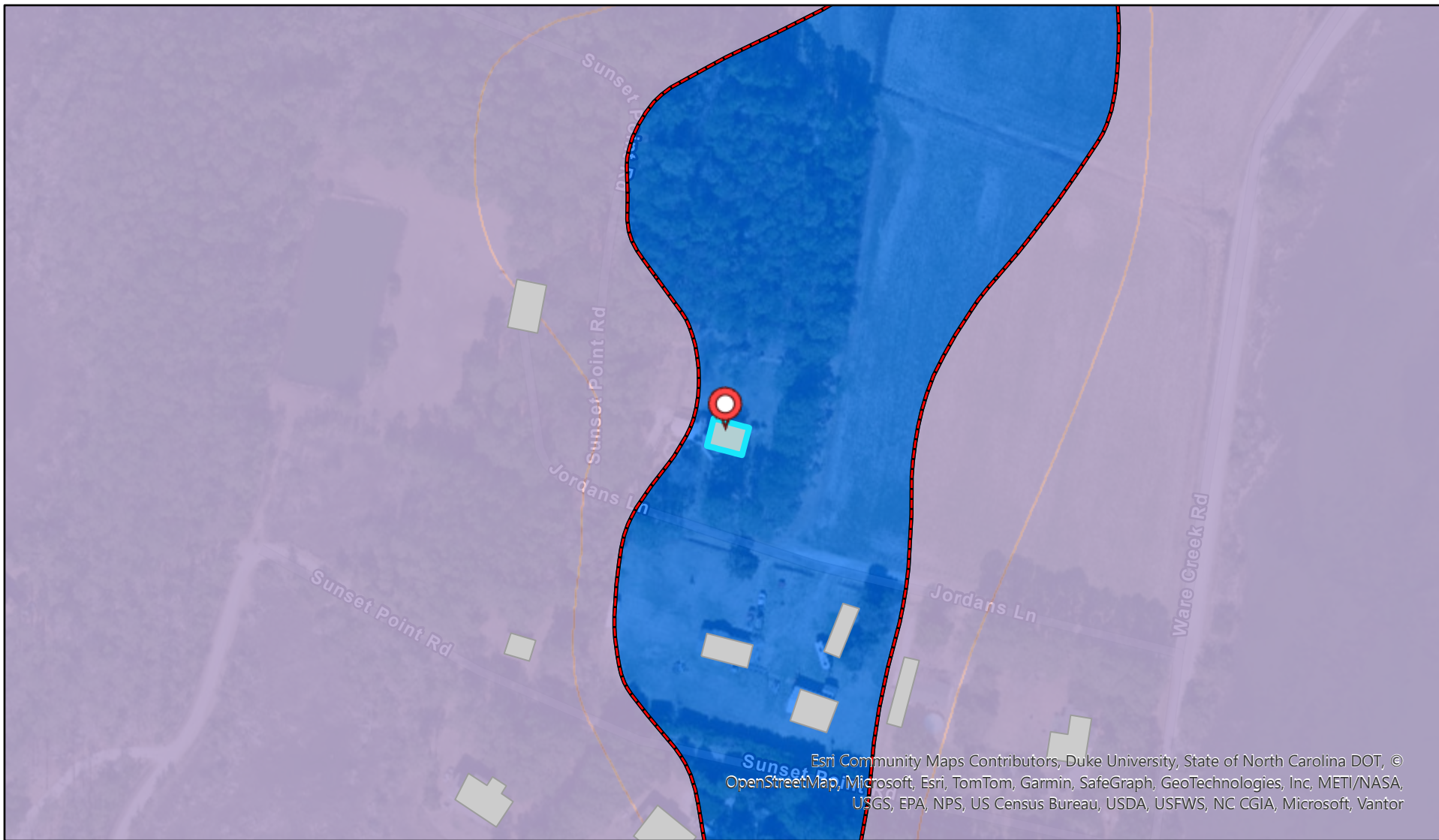


Legend

- | | | | |
|--|-------------------|--|---|
| | Panels | | AE |
| | Political Areas | | Floodway (AE) |
| | Stream Centerline | | 0.2 % Chance Annual Flood Hazard |
| | Cross Sections | | Future Conditions 1% Annual Chance Flood Hazard |
| | Levee | | |

North Carolina Floodplain Mapping Program





Legend

- | | | | |
|--|-------------------|---|---|
|  | Panels |  | Flood Hazard Areas
AE |
|  | Political Areas |  | Floodway (AE) |
|  | Stream Centerline |  | 0.2 % Chance Annual Flood Hazard |
|  | Cross Sections |  | Future Conditions 1% Annual Chance Flood Hazard |
|  | Levee | | |

North Carolina Floodplain Mapping Program

