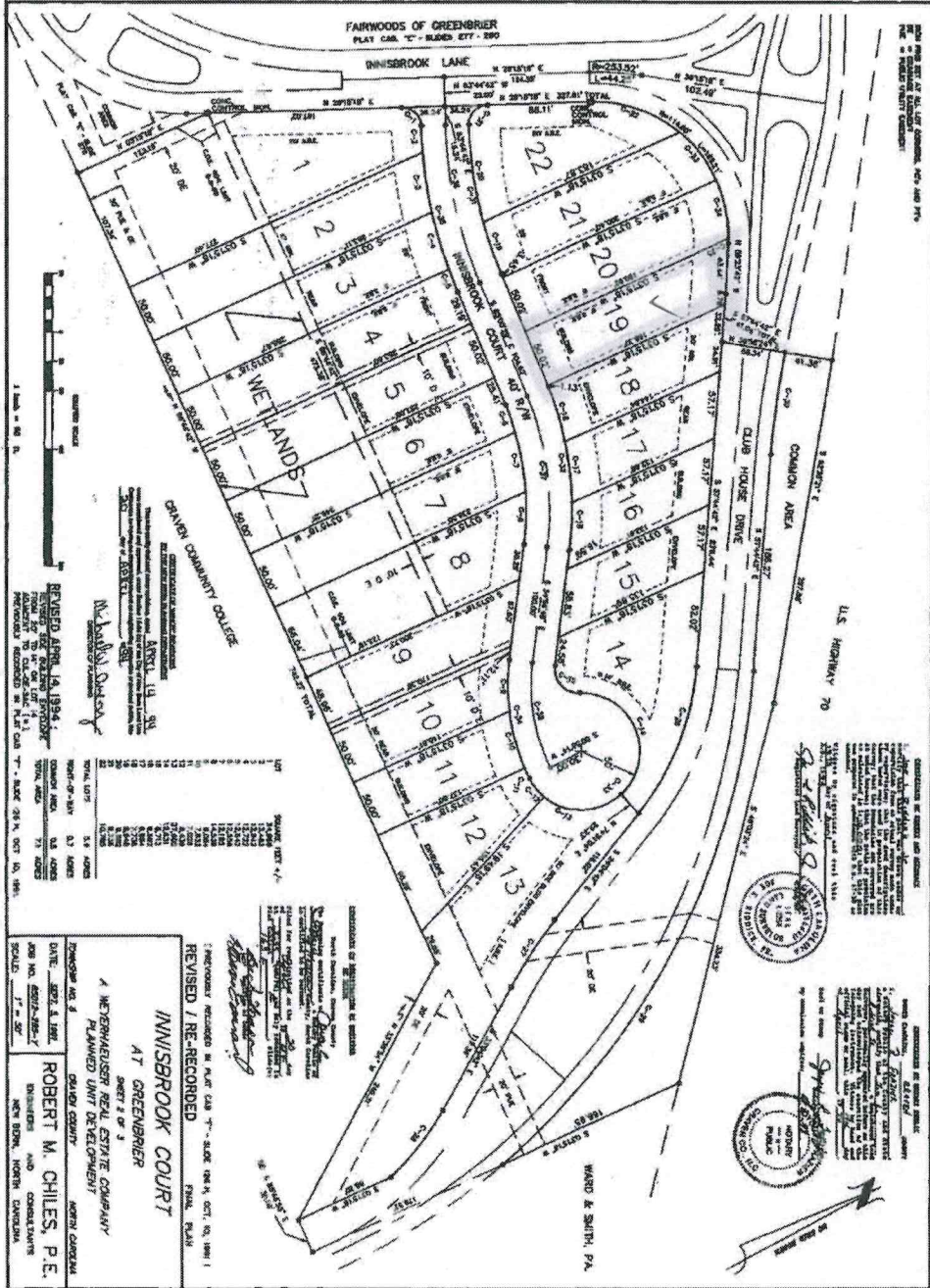


Plat Map

F 163-F



REVISED APRIL 14, 1994
 RECORDED IN PLAT C&B '7'-SLIDE 277-390
 RECORDED IN PLAT C&B '7'-SLIDE 277-390

LOT	ACRES	AREA
1	0.25	10,890
2	0.25	10,890
3	0.25	10,890
4	0.25	10,890
5	0.25	10,890
6	0.25	10,890
7	0.25	10,890
8	0.25	10,890
9	0.25	10,890
10	0.25	10,890
11	0.25	10,890
12	0.25	10,890
13	0.25	10,890
14	0.25	10,890
15	0.25	10,890
16	0.25	10,890
17	0.25	10,890
18	0.25	10,890
19	0.25	10,890
20	0.25	10,890
21	0.25	10,890
22	0.25	10,890

INNISBROOK COURT
 AT GREENBRIER
 SHEET 2 OF 3
 A MEMPHIS INVESTMENT COMPANY
 PLANNED UNIT DEVELOPMENT
 GREEN COUNTY
 ROBERT M. CHILES, P.E.
 ENGINEER AND CONSULTANT
 NEW BORN, NORTH CAROLINA

F 163-F