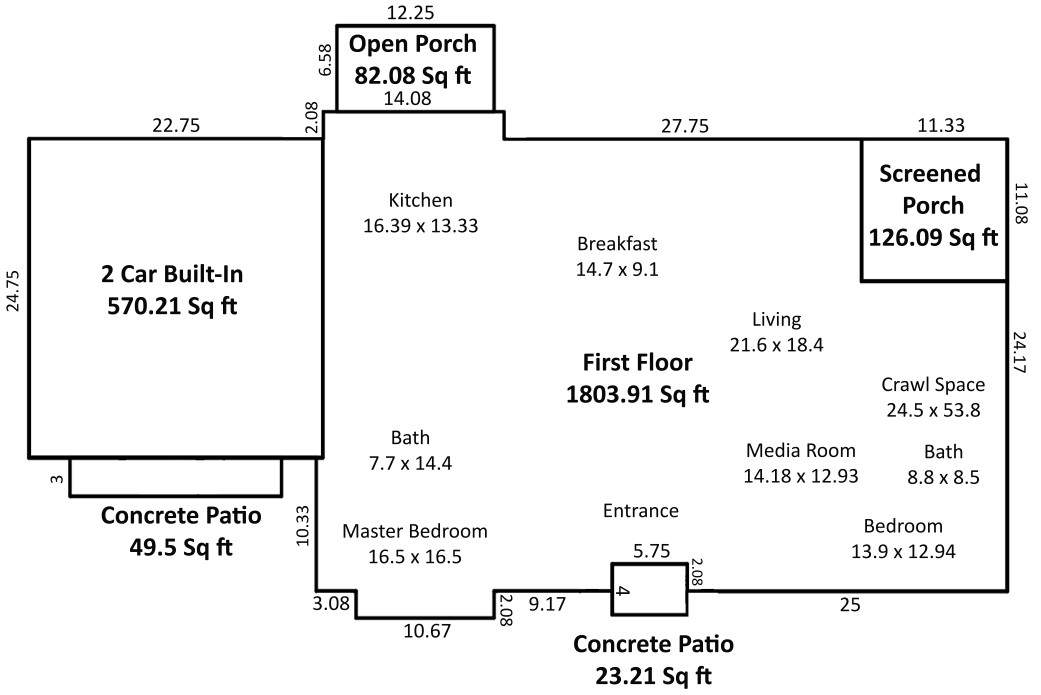


6 DRIVING RANGE ROAD

Gross Living Area - 1804 Sq Ft

Non-Living Area - 851 Sq Ft



Area Calculation Summary

| Gross Living Area | Calculation Details |
|------------------------------|---------------------|
| First Floor | 1804 Sq Ft |
| Total Living Area | 1804 Sq Ft |
| Non-Living Area | |
| 2 Car Built-In | 570 Sq Ft |
| Concrete Patio | 23 Sq Ft |
| Concrete Patio | 50 Sq Ft |
| Open Porch | 82 Sq Ft |
| Screened Porch | 126 Sq Ft |
| Total Non-Living Area | 851 Sq Ft |