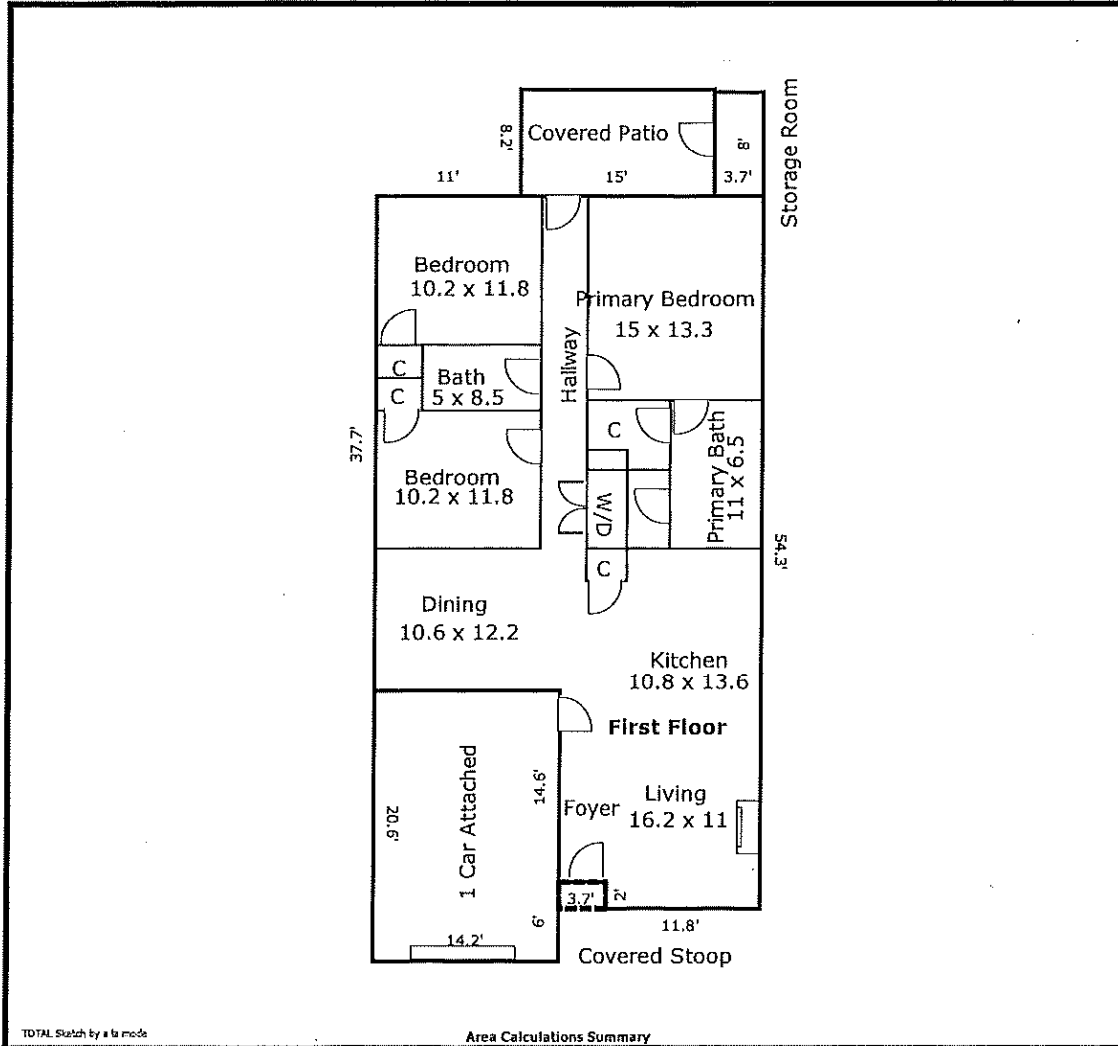


Maple Plan



TOTAL Sketch by a la mode

Area Calculations Summary

		Calculation Details
Living Area		
First Floor	1369.59 Sq ft	$29.7 \times 37.7 = 1119.69$ $15.5 \times 14.6 = 226.3$ $2 \times 11.8 = 23.6$
Total Living Area (Rounded): 1370 Sq ft		
Non-living Area		
Storage Room	29.6 Sq ft	$3.7 \times 8 = 29.6$
1 Car Attached	292.52 Sq ft	$14.2 \times 20.6 = 292.52$
Covered Stoop	7.4 Sq ft	$3.7 \times 2 = 7.4$
Covered Patio	123 Sq ft	$8.2 \times 15 = 123$