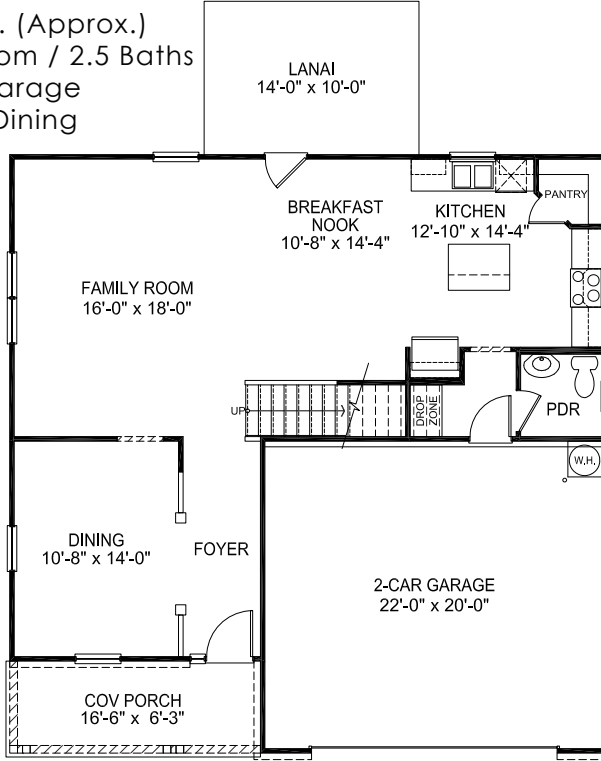
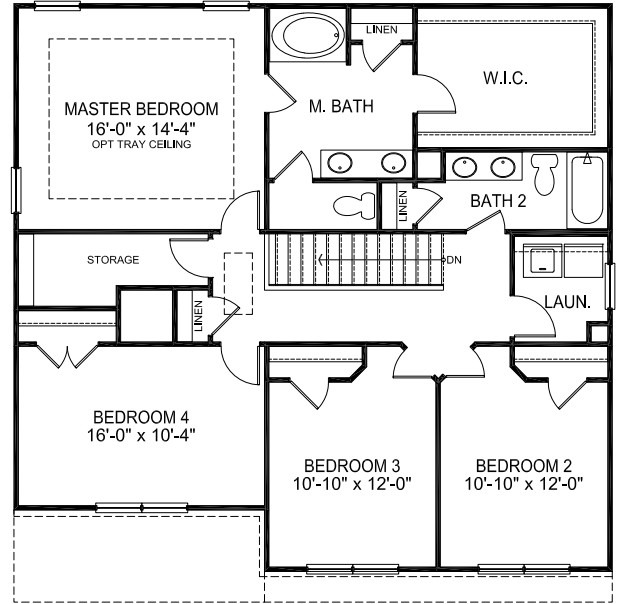


2307

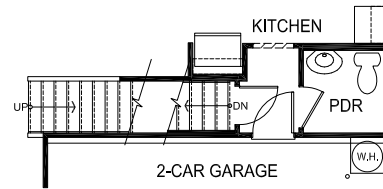
2,307 s.f. (Approx.)
 4 Bedroom / 2.5 Baths
 2 Car Garage
 Formal Dining



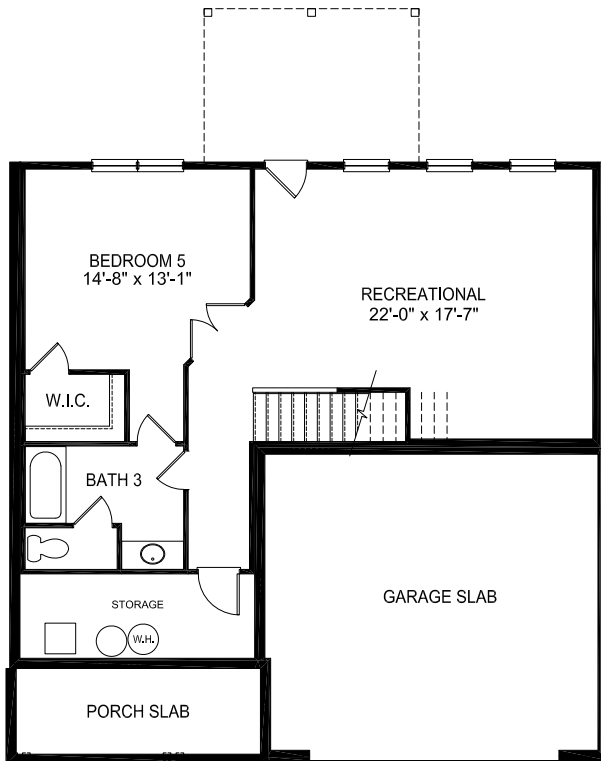
First Floor



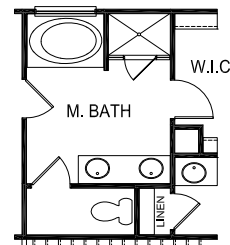
Second Floor



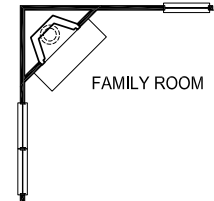
Stairs at Opt. Basement



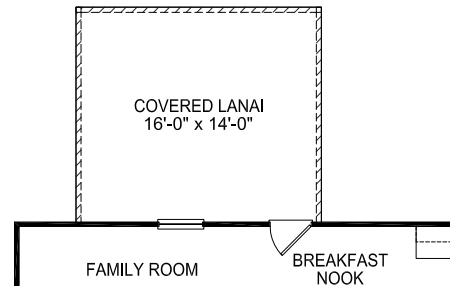
Opt. Basement



Opt. Master Bath



Opt. Fireplace



Opt. Covered Lanai

NC #59785
 SC #RBB.22464
 GA #RBQA005711

Important Disclaimer: This floor plan is not to scale. Square footage and room dimensions are approximate. Square footage calculations are based on foundation dimensions only and may vary from finished square footage of the home as constructed. Variations of this floor plan exist that may not be represented in this image.

Follow Us: [f](#) [t](#) [in](#) [v](#) [s](#) or <http://www.adamshomes.com>