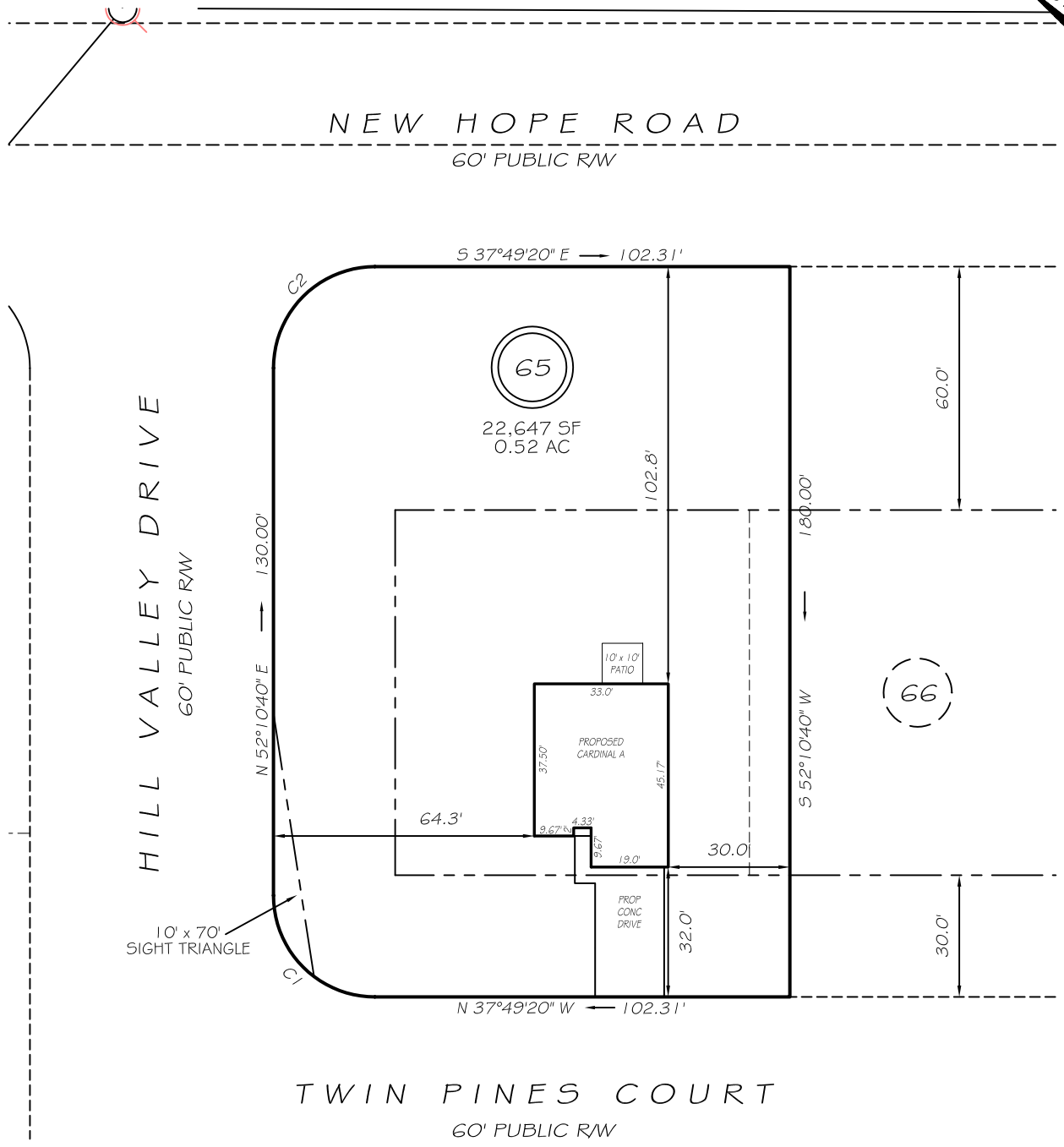
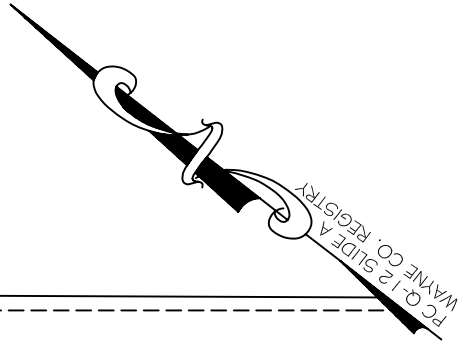


I, MICHAEL P. GRIFFIN, certify that under my direction and supervision this map was drawn from an actual field survey, that the error of closure of the survey as calculated by coordinates is 1: 10,000+; that the area shown hereon was calculated by coordinates. Dashed lines shown hereon were not surveyed.

Witness my hand and seal this day of MONTH 2025.

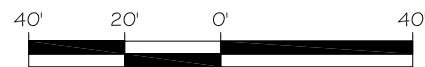


**IMPERVIOUS AREAS**

HOUSE	1383 SQ. FT.
DRIVE & WALKS	594 SQ. FT.
PATIO	100 SQ. FT.
<b>TOTAL</b>	<b>2077 SQ. FT.</b>
<b>ALLOWED</b>	<b>3500 SQ. FT.</b>

**SETBACKS**

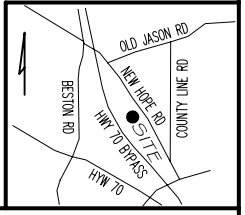
FRONT	30'
REAR	25'
SIDE	10'
CORNER SIDE	25'
REAR (NEW HOPE RD)	60'



C1 R=25.00' L=39.27' S07°10'40"W 35.36'  
 C2 R=25.00' L=39.27' N82°49'20"W 35.36'

**LEGEND**

EIP	EXISTING IRON PIPE	FES	FLARED END SECTION
RBS	REBAR SET	WM	WATER METER
R/W	RIGHT OF WAY	CO	CLEAN OUT
N/F	NOW OR FORMERLY	FH	FIRE HYDRANT
EIS	EXISTING IRON STAKE	CB	CATCH BASIN



**P R E L I M I N A R Y**  
 NOT FOR RECORDATION,  
 SALES OR CONVEYANCE



**GRIFFIN LAND SURVEYING, INC.**

P. O. BOX 148  
 FUQUAY-VARINA, NC 27526  
 (919) - 567 - 1963

FIRM LIC.# C-1345

**PLOT PLAN FOR**  
**BEN STOUT**  
**CONSTRUCTION**  
 LYON ESTATES SUBDIVISION

**LOT 65**  
 TWIN PINES COURT  
 LA GRANGE, NC  
 WAYNE COUNTY NEW HOPE TOWNSHIP

DRAWN BY **KDF**

DATE **3/26/25**

CHECKED BY **MPG**

SCALE **1" = 40'**