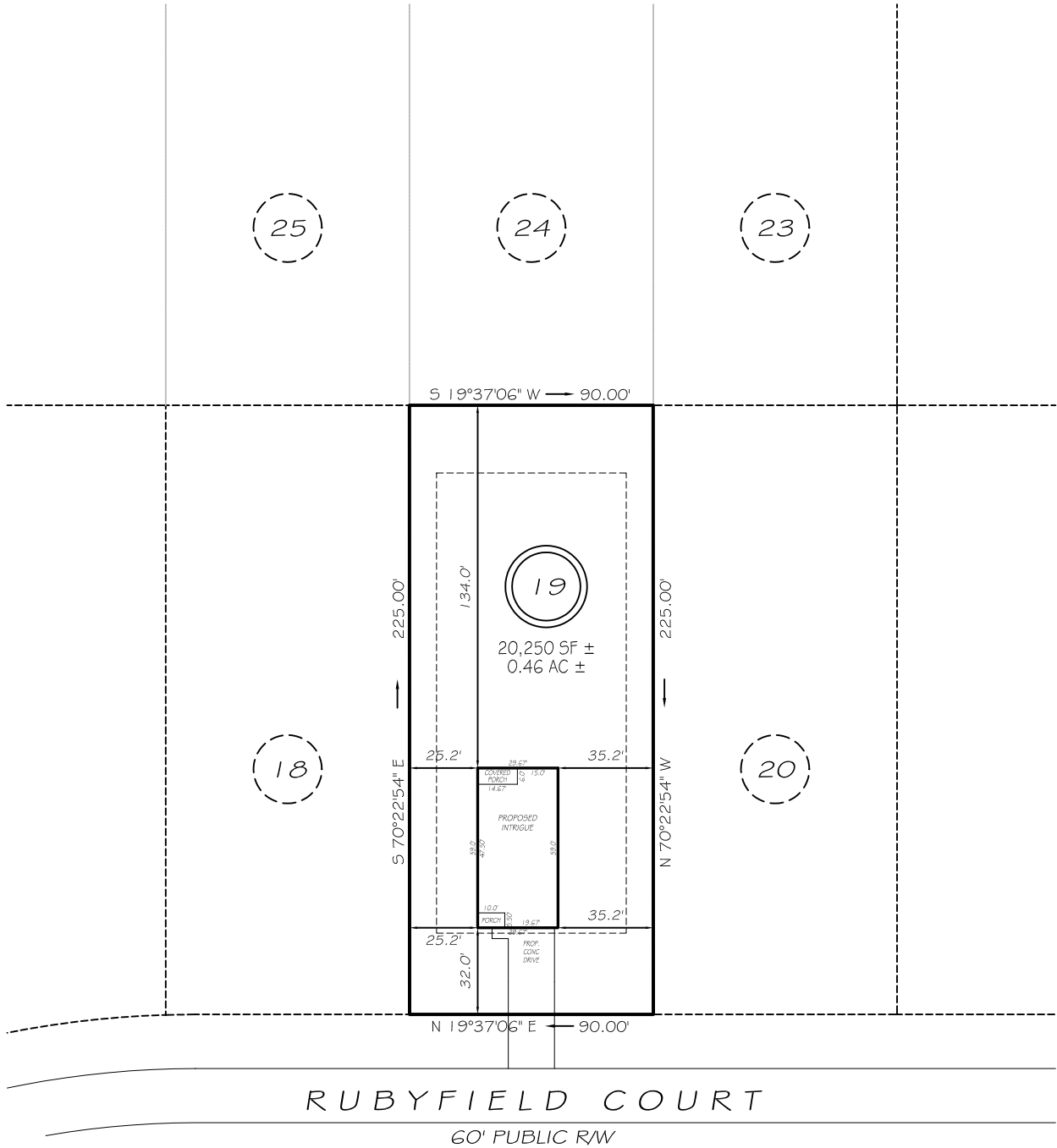


I, MICHAEL P. GRIFFIN, certify that under my direction and supervision this map was drawn from an actual field survey; that the error of closure of the survey as calculated by coordinates is 1: 10,000+; that the area shown hereon was calculated by coordinates. Dashed lines shown hereon were not surveyed.

Witness my hand and seal this day of MONTH 2025.

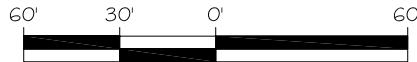
WAYNE CO. REGISTRY  
BK 0-18-A PAGES 1-4



RUBYFIELD COURT  
60' PUBLIC RW

SETBACKS

FRONT	30'
REAR	25'
SIDE	10'
CORNER SIDE	25'



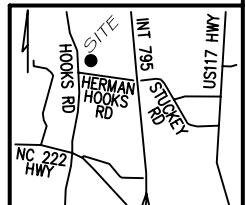
GRAPHIC SCALE  
1" = 60'

REVISION: MOVE LEFT 7/15/25

**P R E L I M I N A R Y**  
NOT FOR RECORDATION,  
SALES OR CONVEYANCE

LEGEND

EIP	EXISTING IRON PIPE	FES	FLARED END SECTION
RBS	REBAR SET	WM	WATER METER
R/W	RIGHT OF WAY	CO	CLEAN OUT
N/F	NOW OR FORMERLY	FH	FIRE HYDRANT
EIS	EXISTING IRON STAKE	CB	CATCH BASIN



**GLS** GRIFFIN LAND SURVEYING, INC.  
P. O. BOX 148  
FUQUAY-VARINA, NC 27526  
(919) - 567 - 1963  
FIRM LIC.# C-1345

**PLOT PLAN**  
FOR  
**DREAM FINDERS HOMES LLC**  
**HUNTERS TRACE**  
**LOT 19**  
RUBYFIELD COURT  
GOLDSBORO, N.C.  
WAYNE COUNTY GREAT SWAMP TOWNSHIP

DRAWN BY <b>KDF</b>	DATE <b>6/27/25</b>
CHECKED BY <b>MPG</b>	SCALE <b>1" = 60'</b>