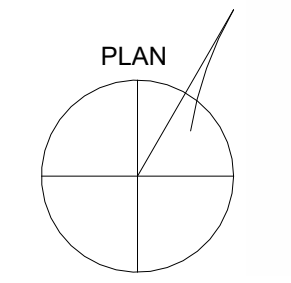


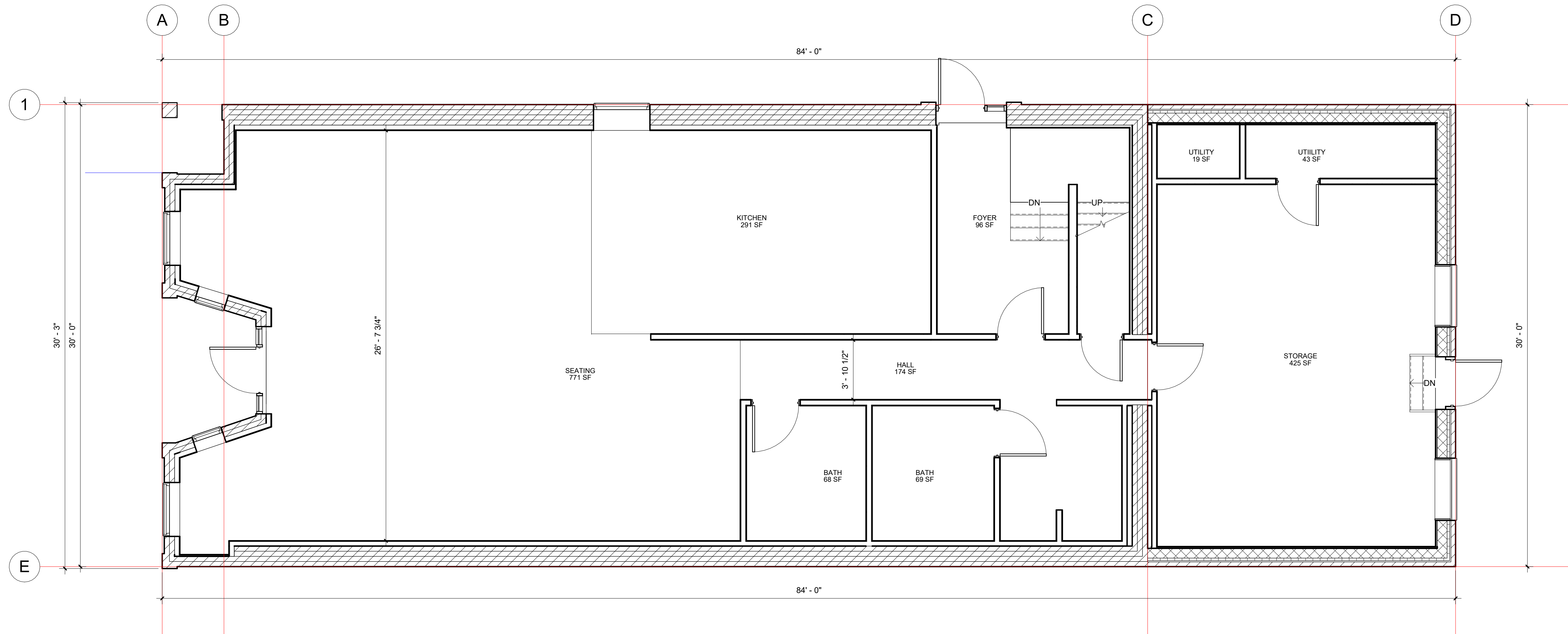
2 FLOOR 1 GROSS AREA
1/16" = 1'-0"

00 OCCUPANT LOAD					
LEVEL	AREA	NAME	NUMBER	FEET PER PERSON	OCCUPANT LOAD
FLOOR 1	771 SF	SEATING	161	15	51.423497
FLOOR 1	291 SF	KITCHEN	162	100	2.912346
FLOOR 1	174 SF	HALL	163	0	
FLOOR 1	69 SF	BATH	164	0	
FLOOR 1	68 SF	BATH	165	0	
FLOOR 1	96 SF	FOYER	166	0	
FLOOR 1	425 SF	STORAGE	167	0	
FLOOR 1	19 SF	UTILITY	168	0	
FLOOR 1	43 SF	UTILITY	169	0	
FLOOR 1: 9	1957 SF				54.335843
FLOOR 2	481 SF	K/L/D	174	0	
FLOOR 2	109 SF	BEDROOM	175	100	1.08527
FLOOR 2	452 SF	K/L/D	176	0	
FLOOR 2	14 SF	LNDRY	177	0	
FLOOR 2	65 SF	LNDRY	178	0	
FLOOR 2	199 SF	BEDROOM	179	100	1.985842
FLOOR 2	243 SF	BEDROOM	180	100	2.428976
FLOOR 2	130 SF	STAIR	181	0	
FLOOR 2	103 SF	BEDROOM	182	100	1.032728
FLOOR 2	7 SF	CLOS	183	0	
FLOOR 2	71 SF	BATH	184	0	
FLOOR 2	73 SF	HALL	185	0	
FLOOR 2: 12	1945 SF				6.532816
LOFT	362 SF	LOFT	173	100	3.62201
LOFT: 1	362 SF				3.62201
FLOOR 3	1392 SF	ATTIC	170	0	
FLOOR 3	67 SF	BATH	171	0	
FLOOR 3	150 SF	STAIR	172	0	
FLOOR 3: 3	1609 SF				0
Grand total: 25	5873 SF				64.490668

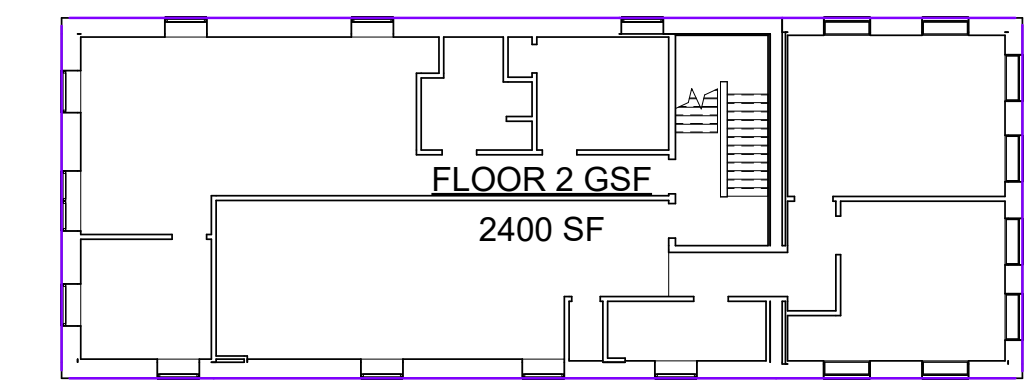
00 AREAS- GROSS	
NAME	AREA
FLOOR 1 GSF	2436 SF
FLOOR 2 GSF	2400 SF
FLOOR 3 GSF	596 SF



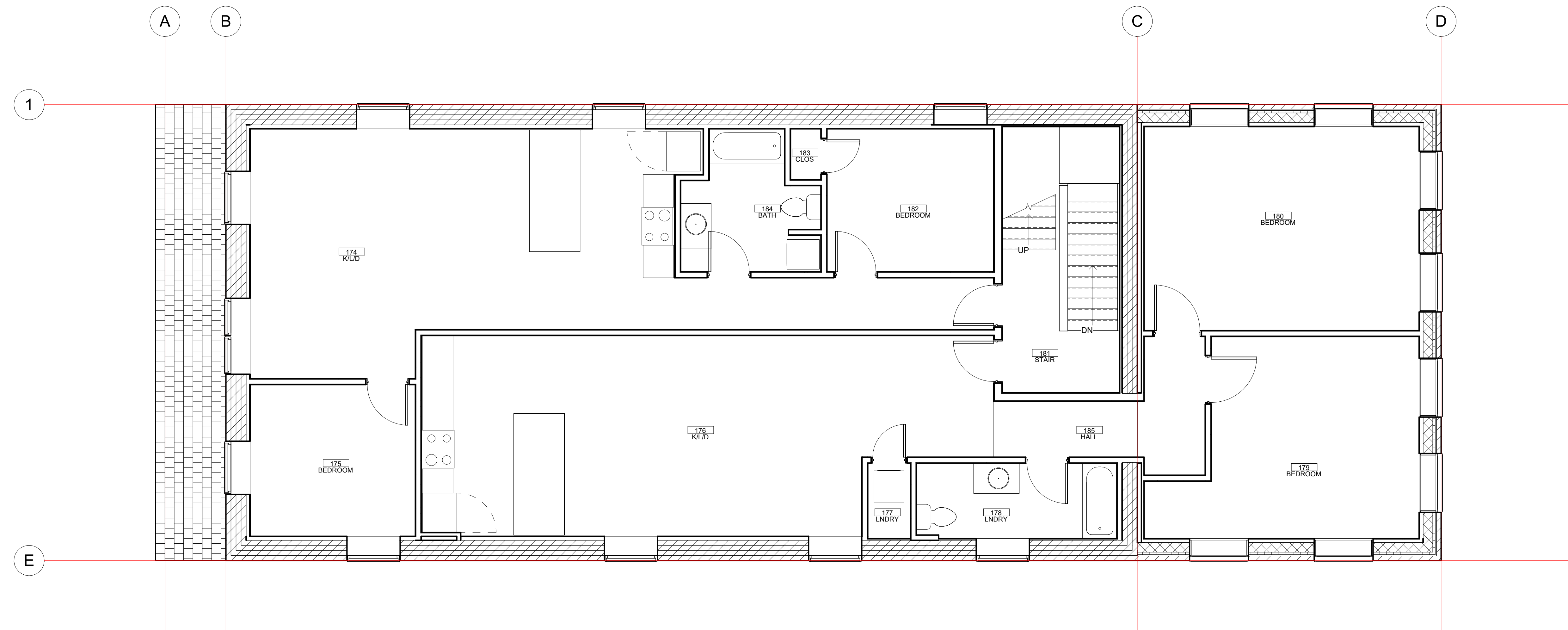
30.000°



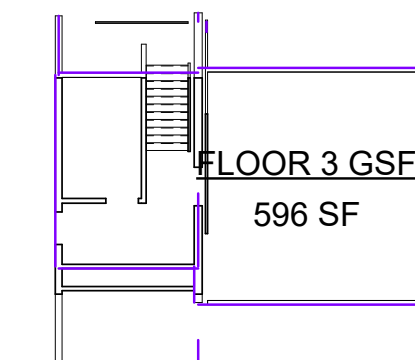
1 FLOOR 1 EXISTING
1/4" = 1'-0"



2 FLOOR 2 GROSS AREA
 1/16" = 1'-0"



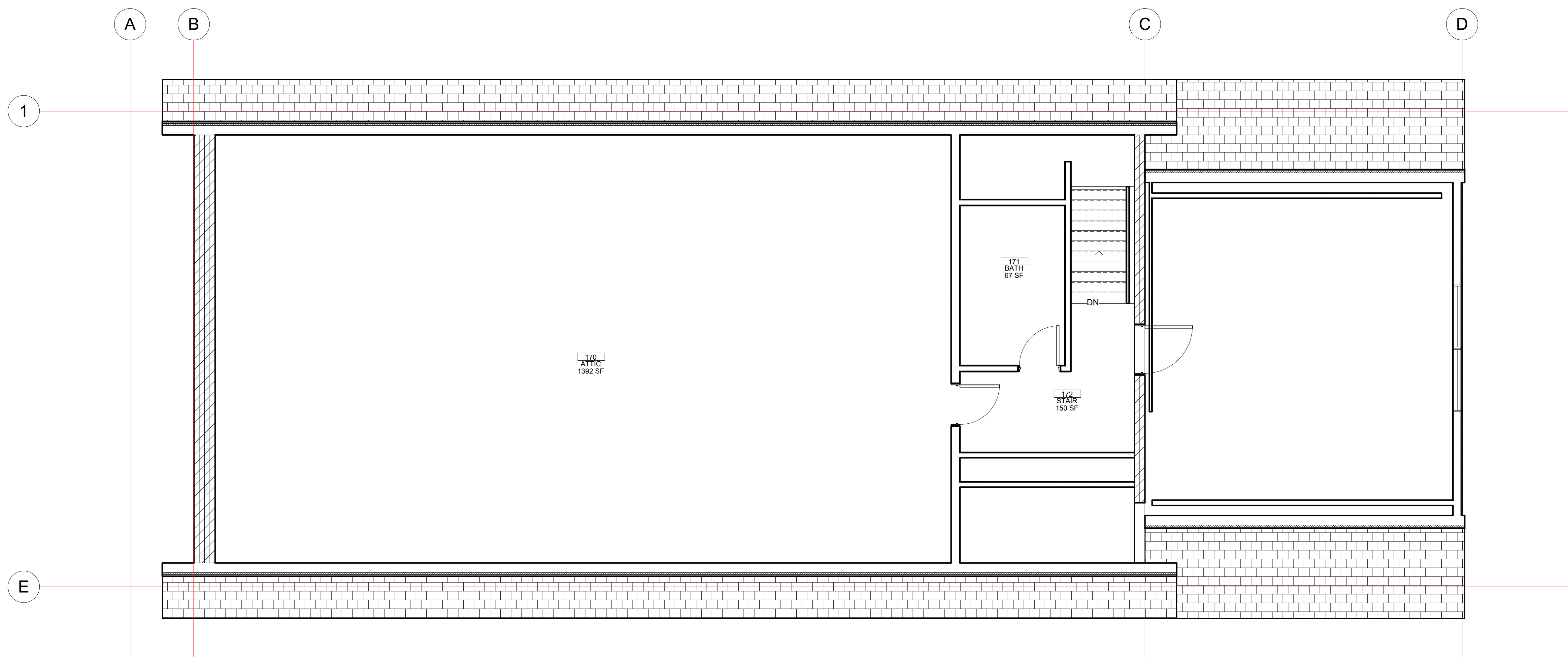
1 EXISTING FLOOR 2
 1/4" = 1'-0"



NOTE: DOES NOT INCLUDE UNCONDITIONED ATTIC

FLOOR 3 GSF
596 SF

2 FLOOR 3 GROSS AREA
1/16" = 1'-0"



1 EXISTING FLOOR 3
1/4" = 1'-0"