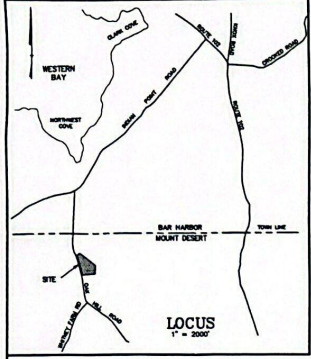


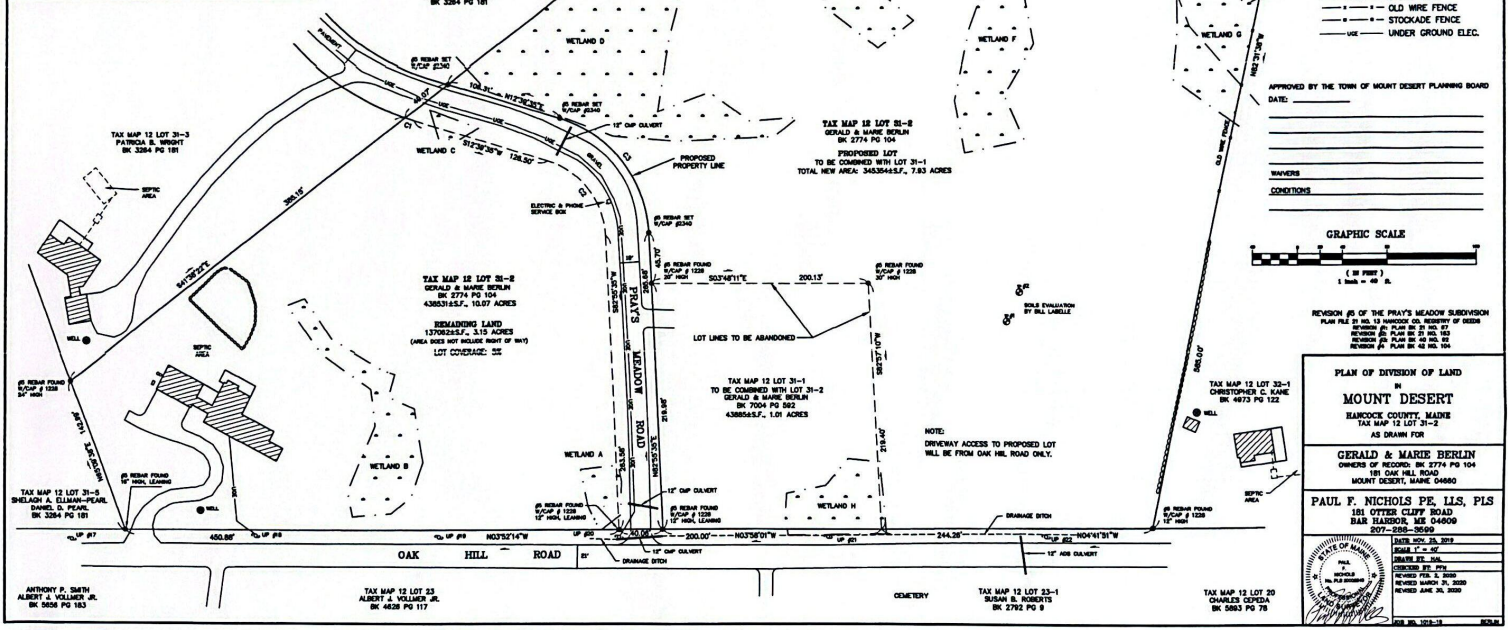
NO.	DATE	BY	APP. LEV. BY	CHG. LEV. BY	CHECKED BY
1	10/15/01
2	10/15/01
3	10/15/01
4	10/15/01

PLAN REFERENCES:
 AMENDED AND REVISED "PRAY'S MEADOW SUBDIVISION" JUNE, 1987, REVISED OCTOBER 10, 1987, AND MAY 26, 1988, SCALE 1" = 100', BY EASTON SURVEYING CO., INC. DATED DEC. 30, 2011, H.C.A.D. PLAN FILE 42 NO. 104.
 BOUNDARY SURVEY FOR MOOREHEAD KENNEDY OF PRAY'S MEADOW SUBDIVISION JUNE 23, 2011, SCALE 1" = 80', BY EASTON SURVEYING CO., INC. H.C.A.D. PLAN FILE 40 NO. 82.
 PRAY'S MEADOW SUBDIVISION FOR THE TRAM COMPANIES (IN 1917 PG 232), OAK HILL MOUNTAIN DESERT, MAINE, JUNE, 1987, SCALE 1" = 100', BY EASTON SURVEYING CO., INC. REVISED OCT. 10, 1987, MAY 26, 1988, H.C.A.D. PLAN FILE 21 NO. 183. SEE ALSO PLAN FILE 21 NO. 13 AND PLAN FILE 21 NO. 87.
 PLAN OF SURVEY FOR JOHN S. FERRARO, JR., OAK HILL ROAD, MOUNT DESERT, MAINE SCALE 1" = 100', SEPTEMBER 5, 1990, BY HENRICK & SALSBURY, INC.

NOTES:
 THE PURPOSE OF THIS PLAN IS TO AMEND THE PRAY'S MEADOW SUBDIVISION BY THE DIVISION OF LOT NO. 3 INTO TWO LOTS BY THE SOUTHERLY LINE OF PRAY'S MEADOW ROAD.
 SEE ATTACHMENT BK 1720 PG 33.
 SEE BARNOR HYDRO ELEC. CO. EASEMENT, PRAY'S MEADOW ROAD BK 1704 PG 301.
 ZONE: RESIDENTIAL 2

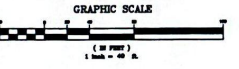


RESOURCE NOTES:
 1. WETLANDS SHOWN HEREON WERE DELINEATED BY ATLANTIC RESOURCE CO. IN NOVEMBER OF 2011 FOR A MUNICIPAL LAND DIVISION. WETLAND DELINEATION COMPLETED IN GENERAL ACCORDANCE WITH THE 1987 ARMY CORPS OF ENGINEERS (ACOE) WETLAND DELINEATION MANUAL AND THE 2015 REGIONAL SUPPLEMENT.
 2. WETLAND BOUNDARIES WERE LOCATED WITH A SUB-METER GPS. PROPOSED WETLAND IMPACTS SHOULD BE FIELD VERIFIED WITH SURVEY GRADE ACCURACY.
 3. POTENTIAL VERNAL POOLS WERE LOCATED OUTSIDE THE SPRING SURVEY BROWN IN GENERAL ACCORDANCE WITH THE CURRENT VERSION OF THE MAINE VERNAL POOL SURVEY PROTOCOL, AND ARE APPROXIMATE. ADDITIONAL SURVEYS DURING THE SPRING SPEEDWATER SEASON MAY BE REQUIRED TO DETERMINE REGULATORY SIGNIFICANCE.
 4. WETLANDS 2-4 ARE FORESTED SCUM-BUSH WETLANDS (PFD & PFB) AND JURISDICTIONAL UNDER STATE AND FEDERAL REGULATIONS. THE WETLANDS HEREON DO NOT MEET THE DEFINITION OF "WETLANDS" UNDER THE MOUNT DESERT MUNICIPAL LAND USE ZONING ORDINANCE FOR SETBACK OR LOT AREA CALCULATIONS.



- LEGEND**
- DRILL HOLE
 - IRON PIN OR PIPE
 - STONE BOUND
 - EXISTING UTILITY POLE
 - SEWER MANHOLE
 - EDGE OF WETLAND
 - STONE WALL
 - OLD WIRE FENCE
 - STOCKADE FENCE
 - UNDER GROUND ELEC.

APPROVED BY THE TOWN OF MOUNT DESERT PLANNING BOARD
 DATE: _____
 WATERS: _____
 CONDITIONS: _____



REVISION (S) OF THE PRAY'S MEADOW SUBDIVISION
 PLAN FILE # NO. 13 HENRICK CO. HISTORY OF DEEDS
 REVISION # PLAN # 21 NO. 82
 REVISION # PLAN # 21 NO. 87
 REVISION # PLAN # 42 NO. 104

PLAN OF DIVISION OF LAND
 IN
MOUNT DESERT
 HANCOCK COUNTY, MAINE
 AS DRAWN FOR
GERALD & MARIE BERLIN
 OWNERS OF RECORD: BK 2774 PG 104
 181 OAK HILL ROAD
 MOUNT DESERT, MAINE 04860

PAUL F. NICHOLS PE, LLS, PLS
 181 OTTER CLIFF ROAD
 BAR HARBOR, ME 04860
 207-285-2690

DATE: 06.26.2023
 DRAWN BY: PFL
 CHECKED BY: PFL
 REVISION # 1
 REVISION DATE: 06.26.2023

ANTHONY P. SMITH
 ALBERT A. VOLLMER JR.
 BK 5808 PG 183

TAX MAP 12 LOT 23
 ALBERT A. VOLLMER JR.
 BK 4829 PG 177

TAX MAP 12 LOT 23-1
 SUSAN B. JOSEPHS
 BK 2792 PG 9

TAX MAP 12 LOT 20
 CHARLES C. GERRA
 BK 5863 PG 78

MAINE STATE SEAL