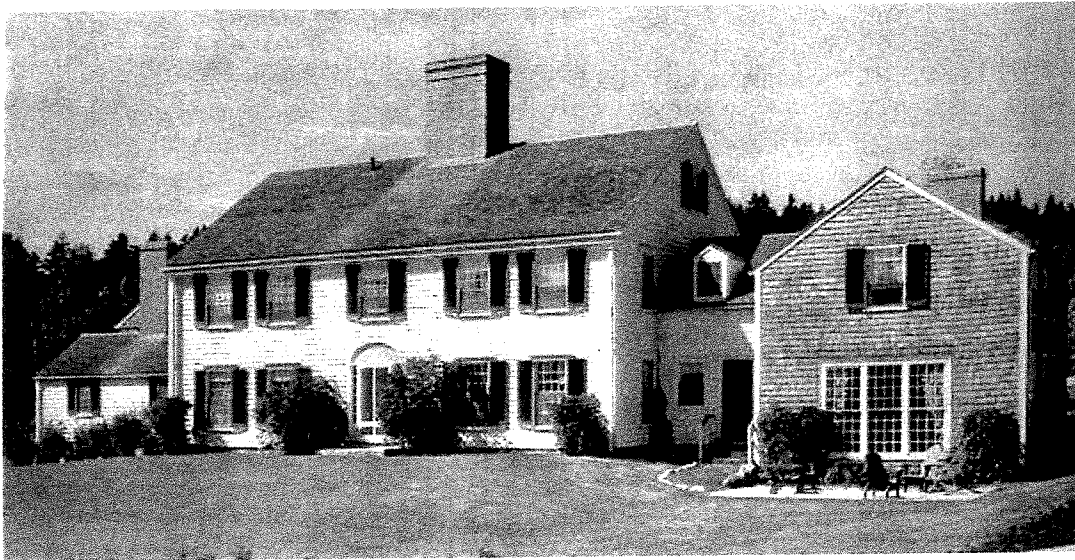
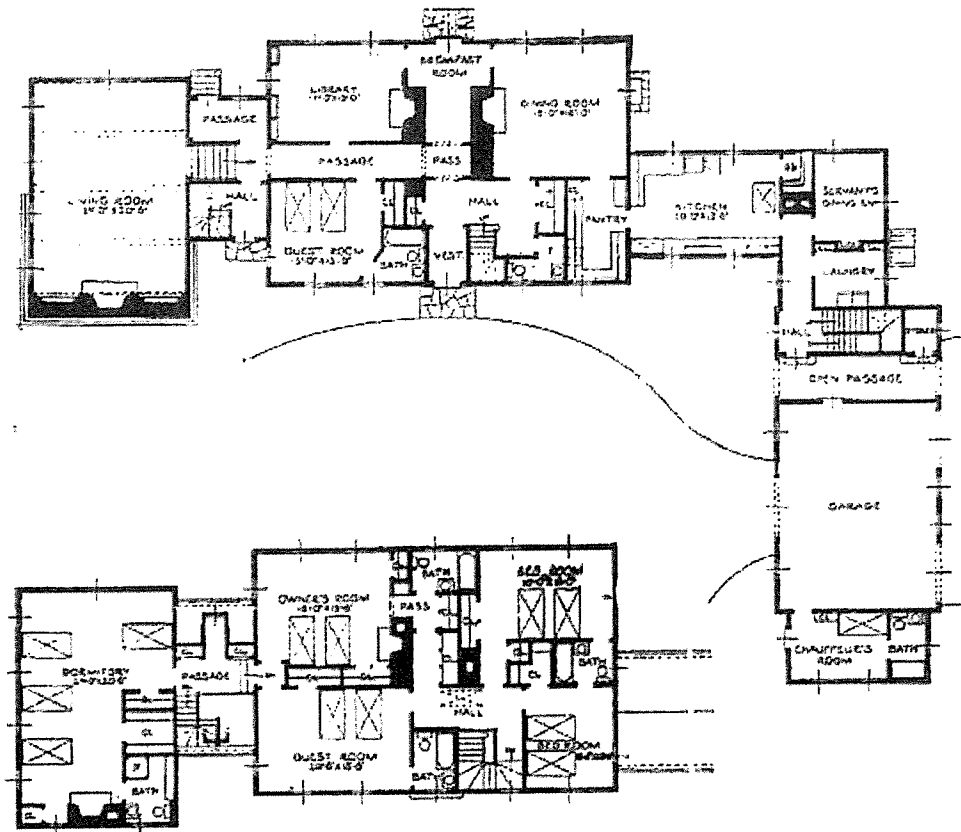


millionaire inventor. Mr. Eddison's architects were Roger Griswold and and Millard Gulick of Little & Russell, and his landscape designer was Beatrix Farrand, who summered in nearby Bar Harbor.



The water front, facing Gilpatrick's Cove, as originally built (HB)

The house, not large by Mt. Desert Island standards, was a carefully studied adaptation of a classic Maine farmhouse. A huge center chimney dominated the scheme, and a dormitory for the Eddison sons occupied the space over the large living room. Not shown on the plan is a large suite of servant's rooms over the garage. Included on the property were two guest cottages and a greenhouse and service garage.



The landscape was similarly understated—Beatrix Farrand was a master at the game of contextual design—grand and exotic when grand and exotic were what were needed, and understated and old fashioned, when that was what was appropriate, as here at Cove End. The plantings were of old fashioned plants, lilacs, viburnum, and ferns, with a large cutting garden of irregular geometric beds near the greenhouses. Sometime after the original design, a stone terrace was added to the water side of the house.

