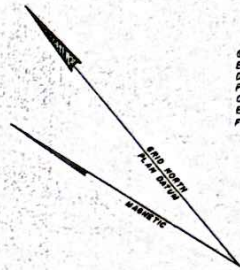
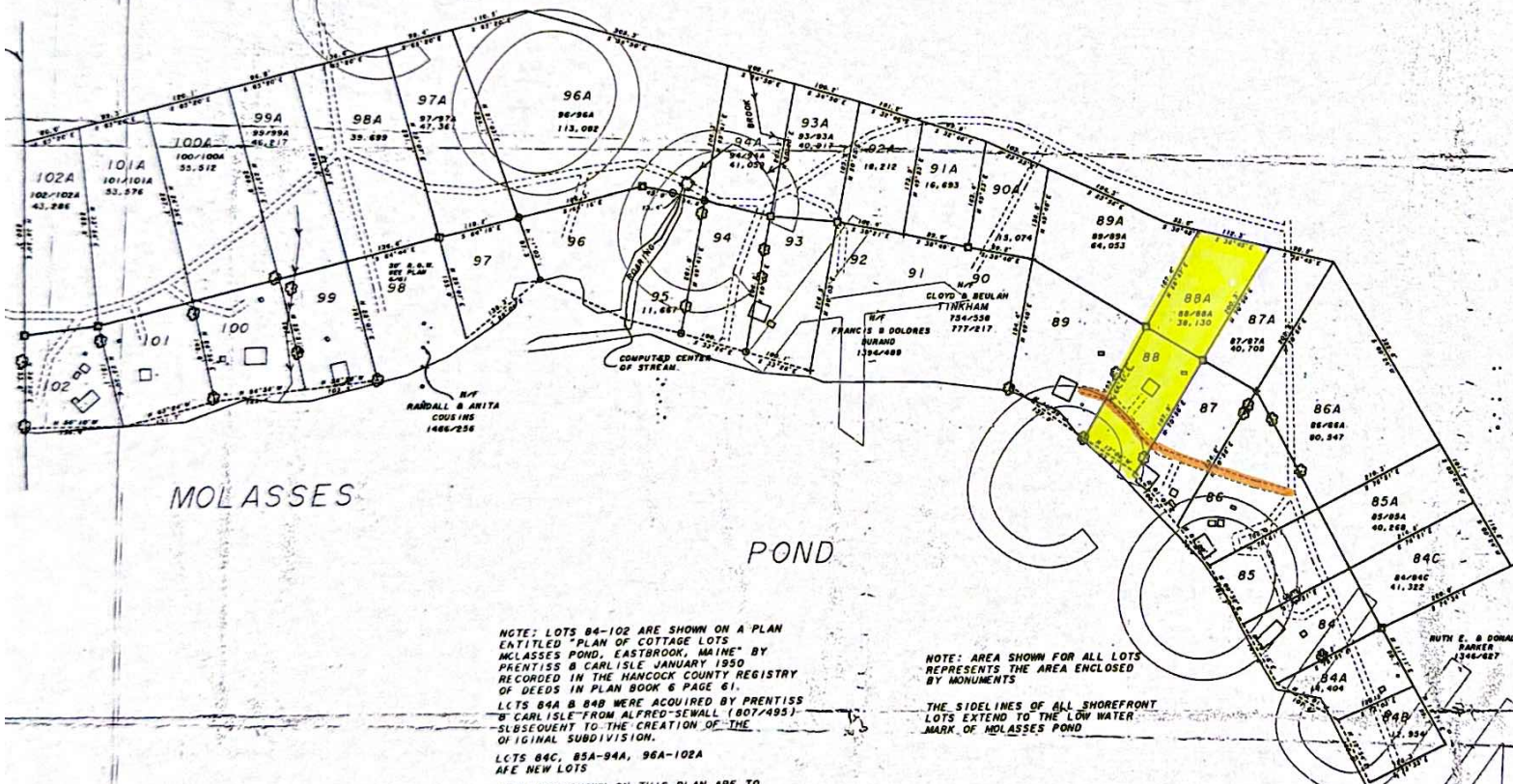


DIAMOND OCCIDENTAL FOREST INC.  
1321/830  
1047/235

GRID NORTH WAS DERIVED FROM A PLAN ENTITLED "SURVEY OF RIGHT OF WAY FOR DIAMOND OCCIDENTAL FOREST INC. MOLASSES POND" DATED MARCH 28, 1988 AND REVISED OCTOBER 3, 1989 BY HEARRICK & SALSBURY ELLSWORTH, MAINE (SHEETS 1-3) RECORDED FILE # 25/72, 72A, 72B



MATCH LINE



MOLASSES

POND

NOTE: LOTS 84-102 ARE SHOWN ON A PLAN ENTITLED "PLAN OF COTTAGE LOTS MOLASSES POND, EASTBROOK, MAINE" BY PRENTISS & CARLISLE JANUARY 1950 RECORDED IN THE HANCOCK COUNTY REGISTRY OF DEEDS IN PLAN BOOK 6 PAGE 81. LOTS 84A & 84B WERE ACQUIRED BY PRENTISS & CARLISLE FROM ALFRED SEWALL (807/495) SUBSEQUENT TO THE CREATION OF THE ORIGINAL SUBDIVISION. LOTS 84C, 85A-94A, 96A-102A ARE NEW LOTS. NEW LOTS SHOWN ON THIS PLAN ARE TO BE SOLD ONLY TO ADJUTING LANDOWNERS

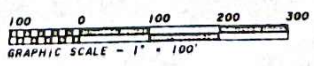
NOTE: AREA SHOWN FOR ALL LOTS REPRESENTS THE AREA ENCLOSED BY MONUMENTS. THE SIDELINES OF ALL SHOREFRONT LOTS EXTEND TO THE LOW WATER MARK OF MOLASSES POND

THIS SURVEY MEETS THE STANDARDS OF THE MAINE BOARD OF REGISTRATION FOR LAND SURVEYORS FOR CATEGORY 1, CONDITION 111 WITH THE FOLLOWING EXCEPTION: RIGHT OF WAY SIDELINES WERE NOT MONUMENTED. FLOOD RIGHTS, IF ANY, CONVEYED TO THE MOLASSES POND LAKE ASSOC. WERE NOT INVESTIGATED.

LOTS 90, 91, 92 & 98 HAVE A 30' WIDE-RIGHT-OF-WAY ACROSS LAND OF DIAMOND OCCIDENTAL FOREST INC. ALONG DRIVEWAYS AND THE PRESENT CAMP ROAD EXCEPT AS SHOWN OTHERWISE.

LEGEND

- WOODEN POST FOUND
- IRON PIPE/PIN FOUND
- C 5/8" STEEL PIN SET
- ⊗ BLAZED & PAINTED TREE
- TRAVELLED WAY
- BUILDING
- TIE LINE
- LOT/AREA DESIGNATION (SQUARE FEET)
- |- UTILITY LINES



PLAN OF  
MOLASSES POND - ROARING BROOK  
CAMP LOTS  
IN  
EASTBROOK, HANCOCK COUNTY, MAINE  
SURVEYED BY  
DIAMOND OCCIDENTAL FOREST INC.  
P.O. BOX 551, OLD TOWN, MAINE

SHEET 1 OF 4  
NOVEMBER 3, 1989

STATE OF MAINE  
HANCOCK, PL. REGISTRY OF DEEDS  
RECEIVED January 3, 1990  
AT 2:51 P.M. AND RECORDED  
FILE # 25 NO REC-1  
ATTEST  
*[Signature]*  
REGISTRAR