

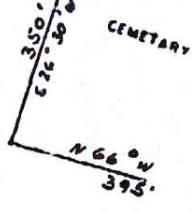
KEY I



(South Sec)

Sta	Bearing
A	S 9° 58' 44" W
B1	S 90° 58' 44" W
B2	S 90° 58' 44" W
B3	S 90° 58' 44" W
B4	S 90° 58' 44" W
B5	S 90° 58' 44" W
B6	S 90° 58' 44" W
B7	S 90° 58' 44" W
B8	S 90° 58' 44" W
B9	S 90° 58' 44" W
B10	S 90° 58' 44" W
B11	S 90° 58' 44" W
B12	S 90° 58' 44" W
B13	S 90° 58' 44" W
B14	S 90° 58' 44" W
B15	S 90° 58' 44" W
B16	S 90° 58' 44" W
B17	S 90° 58' 44" W
B18	S 90° 58' 44" W
B19	S 90° 58' 44" W
B20	S 90° 58' 44" W
B21	S 90° 58' 44" W
B22	S 90° 58' 44" W
B23	S 90° 58' 44" W
B24	S 90° 58' 44" W
B25	S 90° 58' 44" W
B26	S 90° 58' 44" W
B27	S 90° 58' 44" W
B28	S 90° 58' 44" W
B29	S 90° 58' 44" W
B30	S 90° 58' 44" W
B31	S 90° 58' 44" W
B32	S 90° 58' 44" W
B33	S 90° 58' 44" W
B34	S 90° 58' 44" W
B35	S 90° 58' 44" W
B36	S 90° 58' 44" W
B37	S 90° 58' 44" W
B38	S 90° 58' 44" W
B39	S 90° 58' 44" W
B40	S 90° 58' 44" W
B41	S 90° 58' 44" W
B42	S 90° 58' 44" W
B43	S 90° 58' 44" W
B44	S 90° 58' 44" W
B45	S 90° 58' 44" W
B46	S 90° 58' 44" W
B47	S 90° 58' 44" W
B48	S 90° 58' 44" W
B49	S 90° 58' 44" W
B50	S 90° 58' 44" W
B51	S 90° 58' 44" W
B52	S 90° 58' 44" W
B53	S 90° 58' 44" W
B54	S 90° 58' 44" W
B55	S 90° 58' 44" W
B56	S 90° 58' 44" W
B57	S 90° 58' 44" W
B58	S 90° 58' 44" W
B59	S 90° 58' 44" W
B60	S 90° 58' 44" W
B61	S 90° 58' 44" W
B62	S 90° 58' 44" W
B63	S 90° 58' 44" W
B64	S 90° 58' 44" W
B65	S 90° 58' 44" W
B66	S 90° 58' 44" W
B67	S 90° 58' 44" W
B68	S 90° 58' 44" W
B69	S 90° 58' 44" W
B70	S 90° 58' 44" W
B71	S 90° 58' 44" W
B72	S 90° 58' 44" W
B73	S 90° 58' 44" W
B74	S 90° 58' 44" W
B75	S 90° 58' 44" W
B76	S 90° 58' 44" W
B77	S 90° 58' 44" W
B78	S 90° 58' 44" W
B79	S 90° 58' 44" W
B80	S 90° 58' 44" W
B81	S 90° 58' 44" W
B82	S 90° 58' 44" W
B83	S 90° 58' 44" W
B84	S 90° 58' 44" W
B85	S 90° 58' 44" W
B86	S 90° 58' 44" W
B87	S 90° 58' 44" W
B88	S 90° 58' 44" W
B89	S 90° 58' 44" W
B90	S 90° 58' 44" W
B91	S 90° 58' 44" W
B92	S 90° 58' 44" W
B93	S 90° 58' 44" W
B94	S 90° 58' 44" W
B95	S 90° 58' 44" W
B96	S 90° 58' 44" W
B97	S 90° 58' 44" W
B98	S 90° 58' 44" W
B99	S 90° 58' 44" W
B100	S 90° 58' 44" W

TO MARIAVILLE



R 5 to (41) L Rod N 9°-4'-47" E 5528.98'

20.27 Ac

21.40 Ac

20.48 Ac

16.83 Ac

15.64 Ac

15

19.38 Ac

BROOK

Req. Easement for Lots 5 & 35 over existing road

Flow easement paid out

DUMB

2N

4N

5N

6N

3N

S 9° 4' 46" W 2630'

N 9° 4' 46" E 2823'

S 9° 4' 46" W 3043'

N 9° 4' 46" E 3260'

S 9° 4' 46" W 3400'

BR00K

S 35° E

S 38° 45' W 675'

N 59° 38' 30" E 69.1'

N 66° W 395'

E 26-30 W 350'

S 30° 58' 46" E 330'

360'

335'

325'

320'

315'

310'

305'

300'

295'

290'

285'

280'

275'

270'

265'

260'

255'

250'

245'

240'

235'

230'

225'

220'

215'

210'

205'

200'

195'

190'

185'

180'

175'

170'

165'

160'

155'

150'

145'

140'

135'

130'

125'

120'

115'

110'

105'

100'

95'

90'

85'

80'

75'

70'

65'

60'

55'

50'

45'

40'

35'

30'

25'

20'

15'

10'

5'

0'