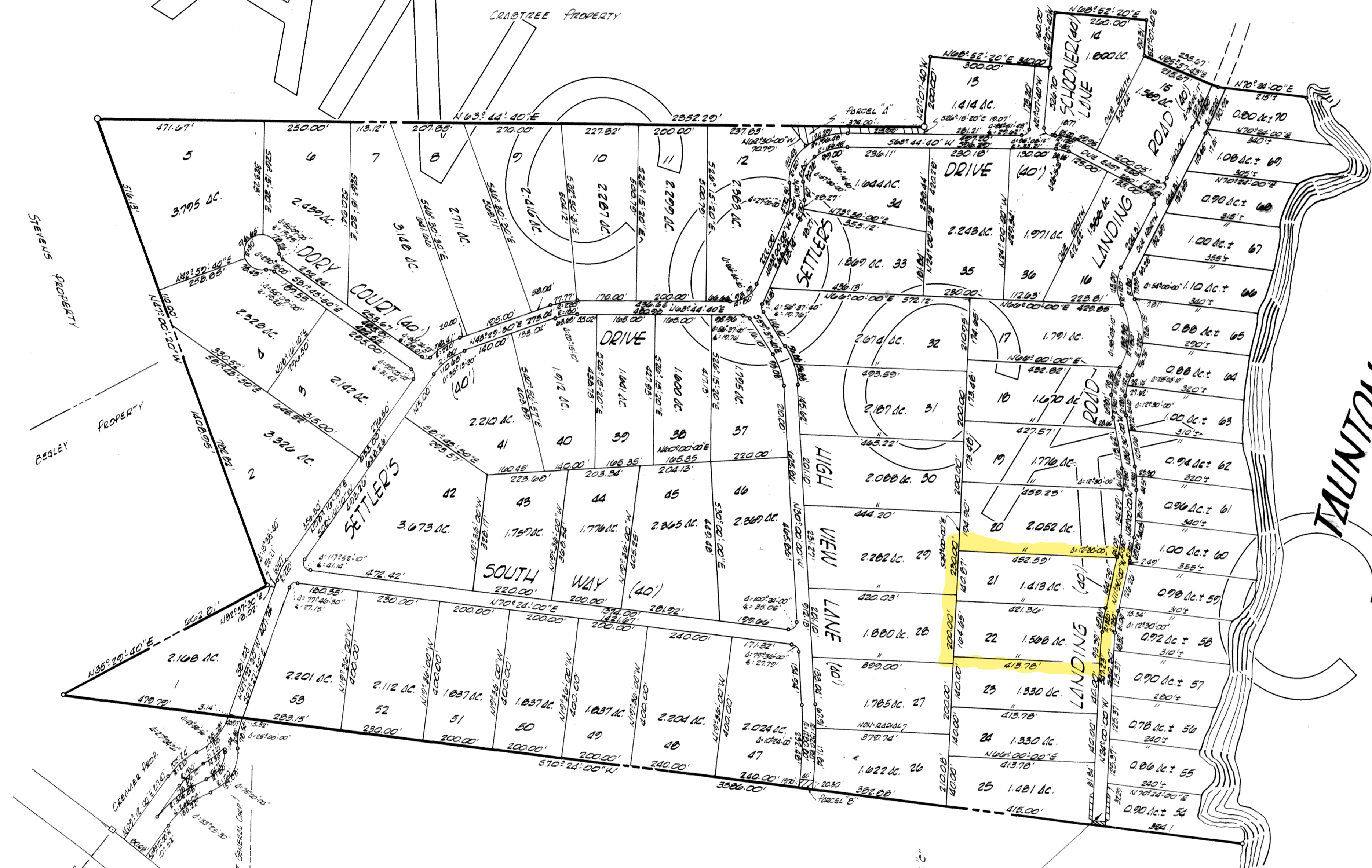
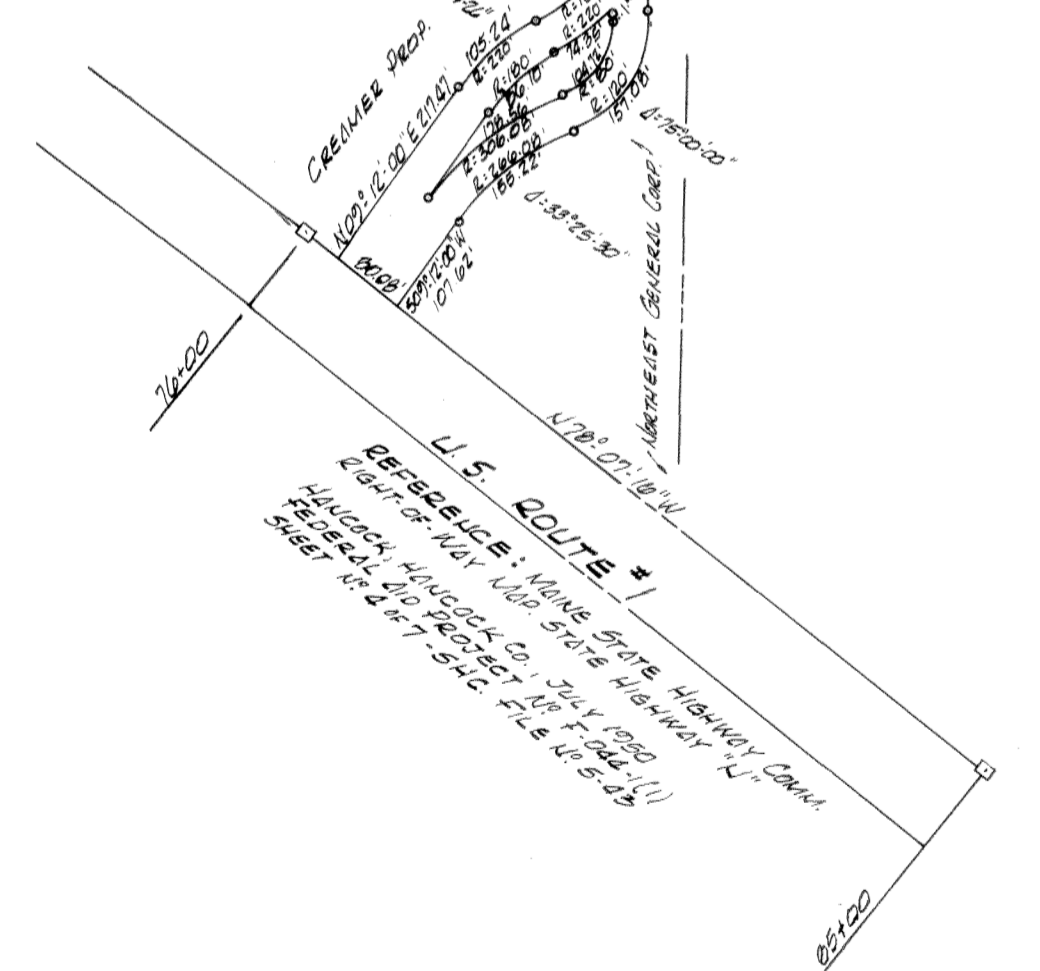


# HAM

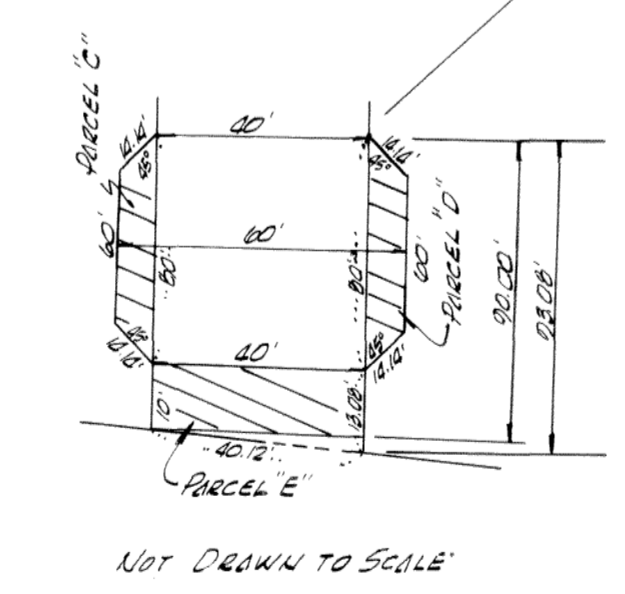


- NOTES:
- 1) THE ORIENTATION OF THIS PLAN IS BASED UPON MULTIPLE SIGHTINGS ON POLARIS AND MAY BE SAID TO ALIGN WITH THE MAINE STATE GRID SYSTEM EAST ZONE, PLUS MINUS TWO (2) MINUTES OF DEC.
  - 2) THE SIDELINE DIMENSIONS BETWEEN LOT NOS. 54 THRU 70, AS SHOWN ON THIS PLAN, ARE APPROXIMATE DISTANCES FROM THE EASTERN RIGHT OF WAY LINE OF LANDING ROAD TO POINTS ON THE LANDWARD SIDE OF THE HIGH WATER LINE, INTENDED TO FALL AT SUITABLE POSITIONS FOR THE PLACEMENT OF PERMANENT MARKERS.
  - 3) THE NORMAL WIDTH OF LOTS 54 THRU 70 MEASURE 125 FEET, WHEREAS THE WATER FRONTAGE DIMENSION WILL BE GREATER, DUE TO THE MEANDERING CHARACTERISTICS OF THE SHORELINE.
  - 4) RADIUS OF ALL FILLET CURVES IS 20.00'
  - 5) ALL RIGHT OF WAY SHOWN ON THIS PLAN USE 40 FEET IN WIDTH.



STATE OF MAINE  
 RECORDS DEPARTMENT OF DEEDS  
 Plan 9  
 Mar 5, 1970  
 11-131  
 Loris Blatten

BOARD OF SELECTMAN  
 TOWN OF HANCOCK, HANCOCK CO, MAINE  
 Leon S. Thorsen 1st Selectman Feb 16, 1970  
 C. Edwin Brown Jr. 2nd SLU. Feb 16, 70  
 Ward M. Springer 3rd SLU. Feb 16, 1970



## SETTLER'S LANDING ON TAUNTON BAY

SECTION ONE  
 TOWN OF HANCOCK HANCOCK COUNTY, MAINE  
 SCALE: 1"=200'  
 FEBRUARY, 1970

PREPARED FOR: NORTHEAST GENERAL CORPORATION  
 BAUBOR, MAINE

H.C. Plummer Jr.  
 H.C. PLUMMER JR., REG. L.S. #110 DATE