

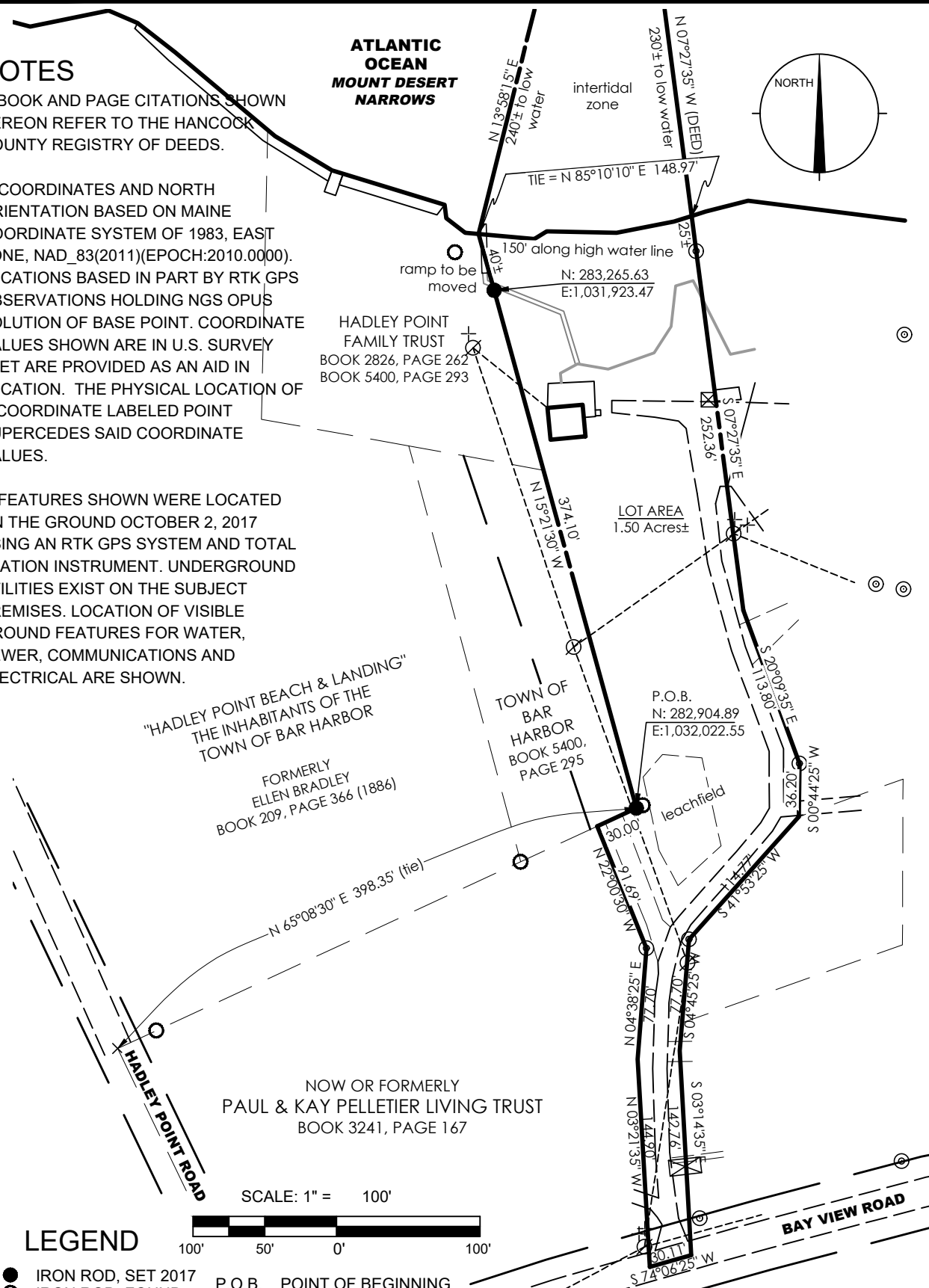
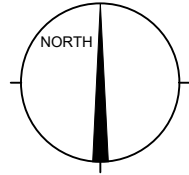
NOTES

1. BOOK AND PAGE CITATIONS SHOWN HEREON REFER TO THE HANCOCK COUNTY REGISTRY OF DEEDS.

2. COORDINATES AND NORTH ORIENTATION BASED ON MAINE COORDINATE SYSTEM OF 1983, EAST ZONE, NAD_83(2011)(EPOCH:2010.0000). LOCATIONS BASED IN PART BY RTK GPS OBSERVATIONS HOLDING NGS OPUS SOLUTION OF BASE POINT. COORDINATE VALUES SHOWN ARE IN U.S. SURVEY FEET ARE PROVIDED AS AN AID IN LOCATION. THE PHYSICAL LOCATION OF A COORDINATE LABELED POINT SUPERCEDES SAID COORDINATE VALUES.

3. FEATURES SHOWN WERE LOCATED ON THE GROUND OCTOBER 2, 2017 USING AN RTK GPS SYSTEM AND TOTAL STATION INSTRUMENT. UNDERGROUND UTILITIES EXIST ON THE SUBJECT PREMISES. LOCATION OF VISIBLE GROUND FEATURES FOR WATER, SEWER, COMMUNICATIONS AND ELECTRICAL ARE SHOWN.

ATLANTIC OCEAN MOUNT DESERT NARROWS



LEGEND

- IRON ROD, SET 2017
- IRON ROD, FOUND
- ⊙ IRON PIPE, FOUND
- ⊠ WOOD POST, FOUND
- P.O.B. POINT OF BEGINNING
- + GUY ANCHOR
- ⊗ UTILITY POLE
- OVERHEAD WIRES
- EDGE OF PAVEMENT
- ADJOINER
- EASEMENT
- BOUNDARY LINE

EXHIBIT B

PALUGA BOUNDARY SKETCH
HUMMINGBIRD LANE
BAR HARBOR, MAINE

PLISGA & DAY

APRIL 18, 2018
Project No. 17223 (PLS No. 2327)

www.WeMapIt.com • 72 MAIN STREET - BANGOR, ME 04401 • (207) 947-0019